



# **NILIMAR** Ships Sale & Purchase

## MARKET REPORT – WEEK 42

BASED ON SALES AND PURCHASES OF VESSELS WEEK ENDED FRIDAY 16<sup>TH</sup> OCTOBER 2009

### *Nilimar's SNP market overview*

It seems the S+P market has really woken up again lately whereby there were quite a few new sales reported last week. These are mainly on the dry side with a bias towards the handies rather than the larger vessels, which would appear to suggest that whilst the market direction is still not certain, those with money to spend are more inclined to do so on smaller sizes where the freight market is more stable rather than 'risk' their monies on the Capes or even Panamaxs where the physical and paper markets are still much more volatile.

Now that the Far East holidays are well and truly over it seems that buyers there are again coming to the fore, hence we note much increased purchase enquiry from the region + a number of the sales we are reporting below have also gone in that direction. Greeks too are notable in amongst the recent buying spree and we are also aware of renewed buying interest here in some quarters.

On the tanker side there was some slight increases in the wet indices last week but in reality values are still falling with very little S+P biz actually being executed at present.

---

THE ABOVE INFORMATION IS GIVEN IN GOOD FAITH BUT WITHOUT GUARANTEE AS TO ACCURACY OF SAYING.

6 A.PAPANDREOU STR., GLYFADA, ATHENS – GREECE

TEL : +30 – 210 - 89 85 813, FAX: +30 – 210 – 89 85 138 e-mail : [nilimar@ath.forthnet.gr](mailto:nilimar@ath.forthnet.gr)

Website: [www.nilimar.com](http://www.nilimar.com)



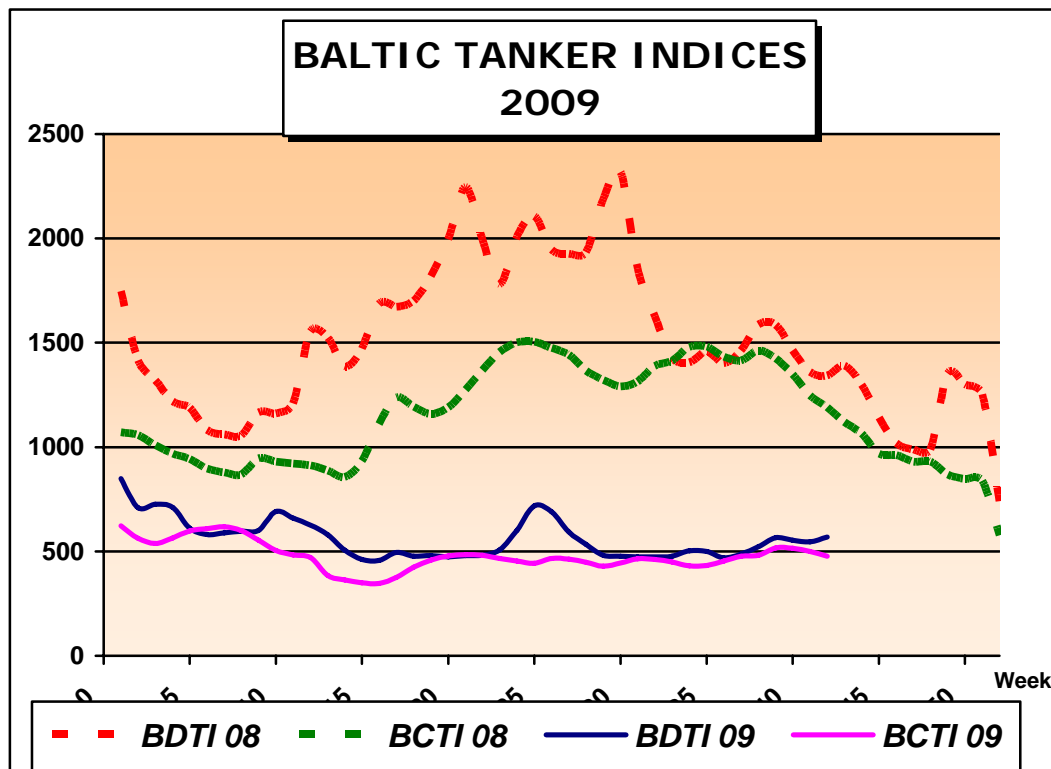
# NILIMAR Ships Sale & Purchase

## TANKERS

VESSEL'S NAME	DWT	YEAR BUILT	YARD	HULL	PRICE USD \$	BUYERS	COMMENTS
REGENT	47.081	7/1992	HALLA INCHON, S.KOREA	DH	5.10 M	UNDISCLOSED	
PACIFIC TOURMALINE	45.018	10/1989	DAEWOO, S. KOREA	DS	4.80 M	UNDISCLOSED	
<b>ARAFURA WIND</b>	<b>17.079</b>	<b>1/1988</b>	<b>BRODOSPLIT, YUGO</b>	<b>DH</b>	<b>6.00 M</b>	<b>MIDDLE EAST</b>	<b>ENBLOC(SERAM WIND)</b>
<b>SERAM WIND</b>	<b>17.042</b>	<b>12/1987</b>	<b>3 MAJ, YUGO</b>	<b>DH</b>	<b>6.00 M</b>	<b>MIDDLE EAST</b>	<b>ENBLOC(ARAFURA WIND)</b>
STELLARIA	13.991	7/1994	ULJANIK, CROATIA	DH	7.00 M	UNDISCLOSED	
SWAN LAKE	10.579	3/1982	OSKARSHAMNS, SWEDEN	DB	2.00 M	UNDISCLOSED	ASIS BASIS
ARABIAN STAR	4.564	6/1991	ATLANTIS ENGINEERING, SONGAPORE	SH	P+C	UNDISCLOSED	

## LPG

VESSEL'S NAME	DWT	YEAR BUILT	YARD	CBM	PRICE USD \$	BUYERS	COMMENTS
<b>- NO SALES REPORTED THIS WEEK -</b>							



THE ABOVE INFORMATION IS GIVEN IN GOOD FAITH BUT WITHOUT GUARANTEE AS TO ACCURACY OF SAYING.

6 A.PAPANDREOU STR., GLYFADA, ATHENS – GREECE

TEL : +30 – 210 - 89 85 813, FAX: +30 – 210 – 89 85 138 e-mail : [nilimar@ath.forthnet.gr](mailto:nilimar@ath.forthnet.gr)

Website: [www.nilimar.com](http://www.nilimar.com)



# NILIMAR Ships Sale & Purchase

<b>BULKERS</b>							
<b>VESSEL'S NAME</b>	<b>DWT</b>	<b>YEAR BUILT</b>	<b>YARD</b>	<b>GEAR</b>	<b>PRICE USD \$</b>	<b>BUYERS</b>	<b>COMMENTS</b>
<b>CAPE SIZE / VLOC</b>							
DYNA AUK	151.220	2/1990	KAWASAKI, JAPAN	-	17.50 M	CHINESE	
<b>PANAMAX / POST-PANAMAX</b>							
FORTUNE CLOVER	77.430	8/2006	OSHIMA, JAPAN	GLESS	35.00 M	UNDISCLOSED	INCL TC TILL JULY 2011 AT 15,550PD
MONTROSE	75.592	1/2002	SANOYAS, JAPAN	GLESS	28.90 M	SOUTH KOREAN	
<b>HANDYMAX / SUPRAMAX</b>							
SARA V	53.806	11/2002	NEW CENTURY, CHINA	CR 4X40T	20.50 M	CHINESE	
BLEST MARINE	47.200	6/1997	DAEDONG, S.KOREA	CR 4X30T	17.30 M	INDIAN (ESSAR)	
PRETTY FLOURISH	46.841	2/1997	DAEDONG, S. KOREA	CR 4X25T	17.45 M	RUSSIAN	
MORNING SKY	45.888	7/1996	IMABARI, JAPAN	CR 4X30T	18.25 M	CHINESE (XIAMEN)	
CAPT. THOMAS J. HUDNER JR	44.216	5/1990	DAEWOO, S. KOREA	CR 3X36T, CR 1X25T	10.00 M	EUROPEAN	(CONVERTED TANKER)
ALBERTO TOPIC	43.473	6/1991	HASHIHAMA TADOTSU, JAPAN	CR 4X30T	12.75 M	EUROPEAN (FEDINVEST)	
<b>HANDIES</b>							
FESCO MARINA	33.773	10/2004	OSHIMA, JAPAN	CR 4X30T	21.85 M	GREEK (INTERGLOBAL)	INCL TC TILL 1-4/2011
JIANGSU 06C-013	30.000	8/2009	JIANGJIANG, CHINA	GRD	24.75 M	HKG	
ROSETTA	29.099	6/1984	IMABARI, JAPAN	CR 4X25T	5.20 M	UNDISCLOSED	
ETERNAL ISLAND	27.841	1/1998	NAIKAI ZOSEN, JAPAN	CR 4X30T	15.00 M	VIETNAMESE	
BLUDANCE	26.517	11/1995	GUANGZHOU, CHINA	CR 4X30T	12.00 M	CHINESE (SHANXI)	
GLOBAL CHALLENGER	25.012	7/1998	IMABARI, JAPAN	CR 3X30.5T		UNDISCLOSED	
CLIPPER STAMFORD	20.731	9/1998	HITACHI, SINGAPORE	CR 3X36T	12.50 M	UNDISCLOSED	
<b>SMALL HANDIES</b>							
GUI SHUN	18.380	8/1979	KURUSHIMA, JAPAN	DERR 4X25T	1.60 M	TAIWANESE	
CARMELA EVDOKIA	10.620	1/1978	FALKENBERGS, SWEDEN	CR 2X25T	1.00 M	UNDISCLOSED	
ALDER	9.865	3/2000	TORGEM, TURKEY	CR 2X40T	2.50 M	EUROPEAN	

THE ABOVE INFORMATION IS GIVEN IN GOOD FAITH BUT WITHOUT GUARANTEE AS TO ACCURACY OF SAYING.

6 A.PAPANDREOU STR., GLYFADA, ATHENS – GREECE

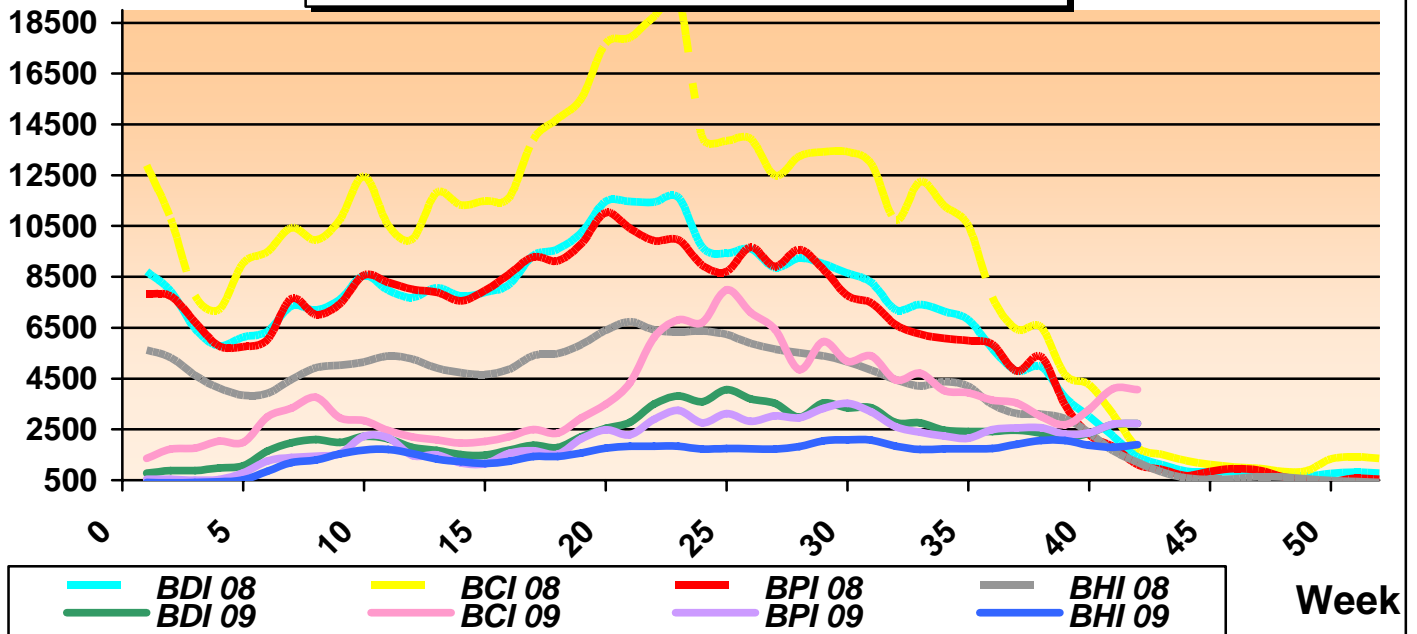
TEL : +30 – 210 - 89 85 813, FAX: +30 – 210 – 89 85 138 e-mail : [nilimar@ath.forthnet.gr](mailto:nilimar@ath.forthnet.gr)

Website: [www.nilimar.com](http://www.nilimar.com)



# NILIMAR Ships Sale & Purchase

## BALTIC DRY INDICES 2009



REPORTED FIXTURES					
VESSEL'S NAME	YEAR BUILT	DWT	RATE	CHARTERERS	DURATION
CYMBELINE	2001	73,081	17,000\$/D	SEMPRA	23/25 MONTHS
DIAMOND SEAS	2001	74,274	16,250\$/D	BUNGE	23/25 MOS / OPT FURTHER YEAR @ 18,500\$/D
LOWLANDS JULIAN	2004	73,613	17,750\$/D	GMI	12 MONTHS
SEA MOON	2009	57,000	14,600\$/D	HMM	2 YEARS
JOSCO TAIZHOU	2005	55,561	24,500\$/D	WBC	3/5 MONTHS
CMB CORALIE	2009	53,000	17,250\$/D	OCEAN TASK	11/13 MONTHS
ELENA TOPIC	1999	49,928	15,250\$/D	CNR	3/5 MONTHS
UNION RANGER	1995	45,621	17,500\$/D	FURNESS WITHY	3/5 MONTHS

BALTIC DRY INDICES	PREVIOUS WEEK	CURRENT WEEK	+ / -	
BDI	2695	2728	33	▲
BCI	4107	4061	-46	▼
BPI	2705	2734	29	▲
BSI	1800	1903	103	▲

THE ABOVE INFORMATION IS GIVEN IN GOOD FAITH BUT WITHOUT GUARANTEE AS TO ACCURACY OF SAYING.

6 A.PAPANDREOU STR., GLYFADA, ATHENS – GREECE

TEL : +30 – 210 - 89 85 813, FAX: +30 – 210 – 89 85 138 e-mail : [nilimar@ath.forthnet.gr](mailto:nilimar@ath.forthnet.gr)

Website: [www.nilimar.com](http://www.nilimar.com)



# NILIMAR Ships Sale & Purchase

## TWEEN / MPP / GENERAL CARGO

VESSEL'S NAME	DWT	YEAR BUILT	YARD	GEAR	PRICE USD \$	BUYERS	COMMENTS
- NO SALES REPORTED THIS WEEK -							

## CONTAINER

VESSEL'S NAME	DWT	YEAR BUILT	YARD	GEAR	TEU	PRICE USD \$	BUYERS	COMMENTS
- NO SALES REPORTED THIS WEEK -								

## REEF

VESSEL'S NAME	DWT	YEAR BUILT	YARD	REEF. CAP/TY	GEAR	PRICE USD \$	BUYERS	COMMENTS
- NO SALES REPORTED THIS WEEK -								

## PCC/ RORO / PASS

VESSEL'S NAME	DWT	YEAR BUILT	YARD	CARS/ LM	PAX	PRICE USD \$	BUYERS	COMMENTS
- NO SALES REPORTED THIS WEEK -								

## DEMOLITION

VESSEL'S NAME	TYPE	DWT	YEAR BUILT	LDT	PRICE USD/LT	SOLD TO	COMMENTS
FRONT VANADIS	TANK	285.873	12/1991	33.031	325	BANGLADESH	
ASTAKOS	TANK	46.828	5/1986	14.432	326	BANGLADESH	
FRIENDSHIPGAS	LPG	5.986	11/1981		P+C	UNDISCLOSED	
MANILA STAR	BULK	34.039	12/1978	8.468	270	CHINA	
ALINA	BULK	27.090	1/1977		P+C	UNDISCLOSED	
ALKISTIS	BULK	8.850	11/1982	3.500	290	PAKISTAN	
DAEWOO FRONTIER	RORO	25.450	8/1988	15.796	250	ASIS CAPETOWN	VIA AUCTIONMA

## NEWBUILDINGS

TYPE	DWT	DELY YEAR	YARD	PRICE USD \$	BUYERS	COMMENTS
TANK	162.000	2011	DAEWOO, S.KOREA	60.00 M	SONANGOL	5 UNITS
TANK	105.000	2011	HYUNDAI, S. KOREA	-	PHOENIX ENERGY	1 UNIT
TANK/PROD	4.000	2010	SAMHO, S,KOREA	10.00 M	UNDISCLOSED	1 UNIT
BULK	179.000	2011	HYUNDAI, S. KOREA	-	KOREA LINE	1 UNIT
BULK	92.000	2011/12	YANGFAN, CHINA	-	H. DAUELSBERG	4 UNITS

THE ABOVE INFORMATION IS GIVEN IN GOOD FAITH BUT WITHOUT GUARANTEE AS TO ACCURACY OF SAYING.

6 A.PAPANDREOU STR., GLYFADA, ATHENS – GREECE

TEL : +30 – 210 - 89 85 813, FAX: +30 – 210 – 89 85 138 e-mail : [nilimar@ath.forthnet.gr](mailto:nilimar@ath.forthnet.gr)

Website: [www.nilimar.com](http://www.nilimar.com)



# NILIMAR Ships Sale & Purchase

BULK	57.000	2011	KOUAN, CHINA	-	PACIFIC CARRIER	3 UNITS
CONT	1.060TEU GLESS	2011	HYUNDAI MIPO, S.KOREA	19.00 M	ADNOC	2 UNITS
MPP	27.000	2011	TAIZHOU KOUAN, CHINA	30.00 M	ETHIOPIAN SHIPPING	7 UNITS
MPP	12.500	2010- 2011	ZHEJIANH, CHINA	-	SPLIETHOFF	6 +2 UNITS

MARKET RATES	PREVIOUS WEEK	CURRENT WEEK	+ / -	
BRENT	71.31	77.51	6.2	▲
USD – GBP	0.6252	0.6116	-0.0136	▼
USD – K WON	1166.35	1157	-9.35	▼
USD – YEN	88.755	91.185	2.43	▲
USD – EURO	0.6875	0.6709	-0.0166	▼

THE ABOVE INFORMATION IS GIVEN IN GOOD FAITH BUT WITHOUT GUARANTEE AS TO ACCURACY OF SAYING.

6 A.PAPANDREOU STR., GLYFADA, ATHENS – GREECE

TEL : +30 – 210 - 89 85 813, FAX: +30 – 210 – 89 85 138 e-mail : [nilimar@ath.forthnet.gr](mailto:nilimar@ath.forthnet.gr)

Website: [www.nilimar.com](http://www.nilimar.com)