



# NILIMAR Ships Sale & Purchase

## MARKET REPORT – WEEK 08

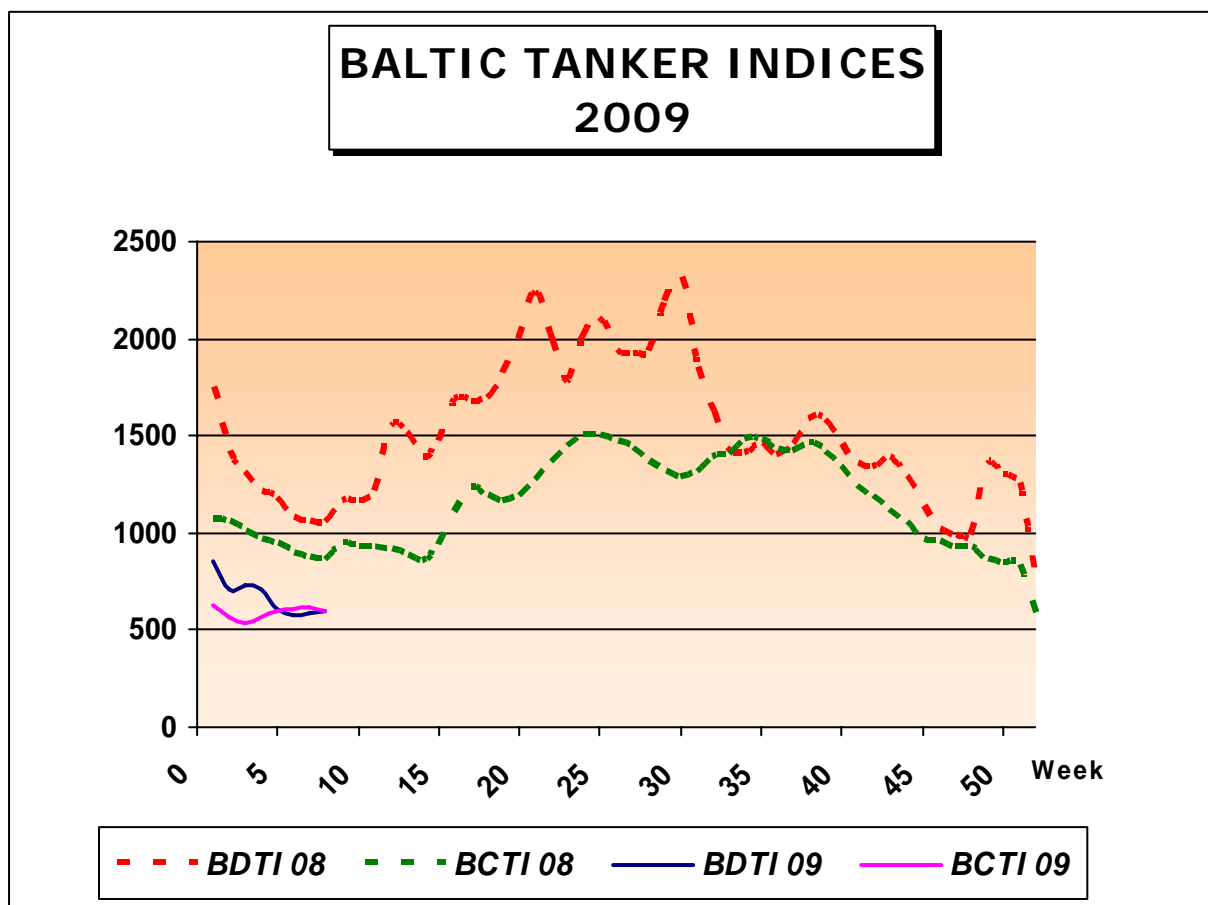
BASED ON SALES AND PURCHASES OF VESSELS WEEK ENDING FRIDAY FEBRUARY 20<sup>th</sup> 2009

### TANKERS

VESSEL'S NAME	DWT	YEAR BUILT	YARD	HULL	PRICE USD \$	BUYERS	COMMENTS
AURORA	35.000	2007	STX, S.KOREA	DH	34.00 M	MIDDLE EASTERN	INCL. 2 YRS TC AT USD 18.000PD
FAIR EAGLE	5.734	1981	KURINOURA, JAPAN	SH	P+C	UNDISCLOSED	ALREADY DELIVERED
QINGDAO HYUNDAI RESALE	5.500	2009	QINGDAO HYUNDAI, CHINA	DH	10.00 M	EUROPEAN	-
QINGDAO HYUNDAI RESALE	5.500	2009	QINGDAO HYUNDAI, CHINA	DH	10.00 M	EUROPEAN	-
ADRAR	2.520	1975	BRAND, GERMANY	DH	0.55 M	GREEK	-
AFROS I	1.804	1969	HITZLER, GERMANY	DB	0.45 M	NIGERIAN	-

### LPG

VESSEL'S NAME	DWT	YEAR BUILT	YARD	CBM	PRICE USD \$	BUYERS	COMMENTS
SIGAS MARINER	1.692	1985	YSSELWERF, NETHERLAND	1.637	P+C	UNDISCLOSED	-



THE ABOVE INFORMATION IS GIVEN IN GOOD FAITH BUT WITHOUT GUARANTEE AS TO ACCURACY OF SAYING.

6 A.PAPANDREOU STR., GLYFADA, ATHENS – GREECE

TEL : +30 – 210 - 89 85 813, FAX: +30 – 210 – 89 85 138 e-mail : [nilimar@ath.forthnet.gr](mailto:nilimar@ath.forthnet.gr)

Website: [www.nilimar.com](http://www.nilimar.com)



# NILIMAR Ships Sale & Purchase

BULKERS							
VESSEL'S NAME	DWT	YEAR BUILT	YARD	GEAR	PRICE USD \$	BUYERS	COMMENTS
ARCTURUS	251.191	1986	NKK, JAPAN	-	13.50 M	UNDISCLOSED	ORE CARRIER
SOUTHERN GALAXY	151.511	1991	SUMITOMO, JAPAN	-	19.50 M	HK BASED	-
OSHIMA 10483	82.300	2009	OSHIMA, JAPAN	GLESS	35.50 M	JAPANESE (NISSHIN)	DELY MARCH 09
GRAND PANAGIOTIS	64.166	1983	SASEBO, JAPAN	GLESS	4.10 M	UNDISCLOSED	-
ONDINA	47.639	1996	OSHIMA, JAPAN	CR 4x25T	15.80 M	UNDISCLOSED	-
PLANICA	42.239	1984	mitsui, JAPAN	CR 4x25T	4.35 M	UNDISCLOSED	-
CHALLENGER II	39.800	1977	mitsubishi, JAPAN	GLESS	P+C	UNDISCLOSED	AT AUCTION
ADVENTURE II	38.871	1980	AESA, SPAIN	GLESS	P+C	UNDISCLOSED	AT AUCTION
MEGALOHARI	37.677	1984	KANASASHI, JAPAN	CR 5x25T	3.95 M	CHINESE	-
EVANGELISTRIA	36.138	1982	IMABARI, JAPAN	CR 4x25T	3.30 M	UNDISCLOSED	-
ORIENT CARP	35.366	1999	KANASASHI, JAPAN	CR 4x30T	16.00 M	UNDISCLOSED	-
DISCOVERY II	32.813	1984	A. WARSKIEGO, POLAND	CR 4x25T	2.30 M	GREEK	AT AUCTION
KUISEB	30.650	1983	AUSTIN, U.K.	CR 4x25T	2.40 M	UNDISCLOSED	-
ATLANTIC QUEEN	28.674	1998	IMABARI, JAPAN	CR 4x30T	13.50 M	GREEK	-
MARITIME TRADER	25.486	1985	IMABARI, JAPAN	CR 3x25T DR 1x25T	3.00 M	UNDISCLOSED	-
SIDER BLACK	18.500	2009	YAMANISHI, JAPAN	CR 3x30T	17.25 M	GREEK	-
JAMNO	16.733	1980	SWAN HUNTER, U.K.	GLESS	P+C	UNDISCLOSED	-
TONG LI	6.612	1985	KOCHI, JAPAN	DR 4x25T	P+C	UNDISCLOSED	-

THE ABOVE INFORMATION IS GIVEN IN GOOD FAITH BUT WITHOUT GUARANTEE AS TO ACCURACY OF SAYING.

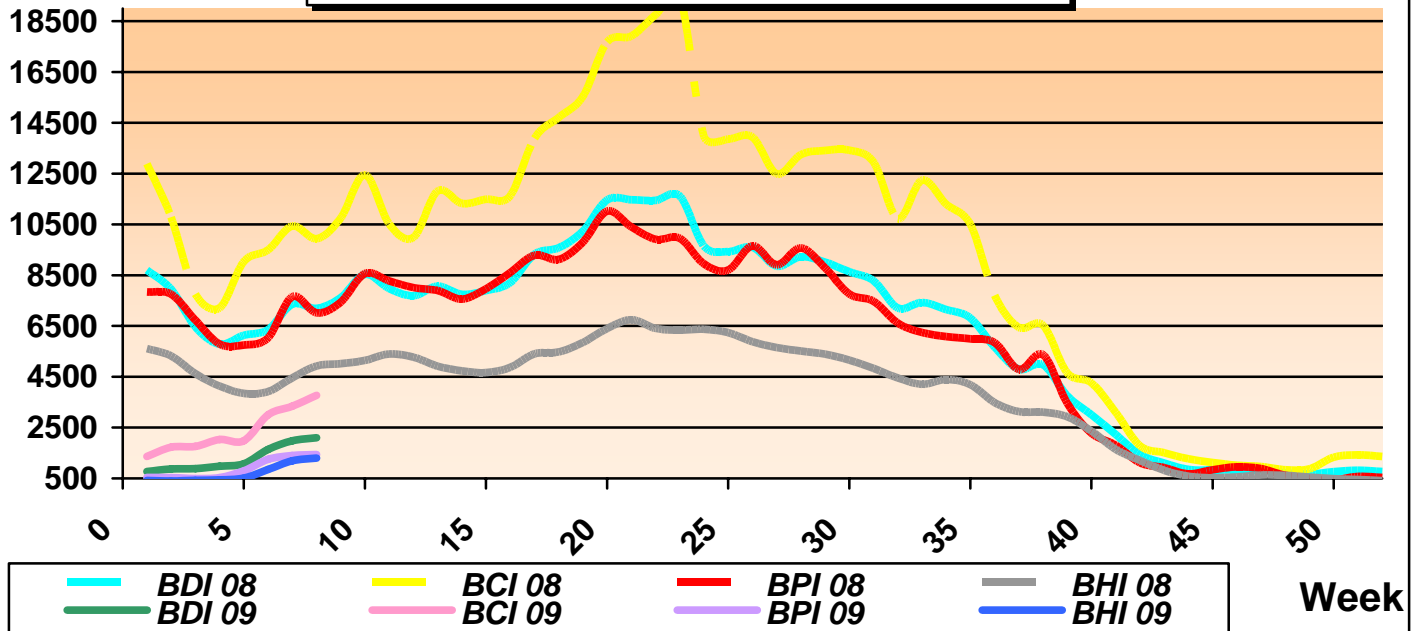
6 A.PAPANDREOU STR., GLYFADA, ATHENS – GREECE

TEL : +30 – 210 - 89 85 813, FAX: +30 – 210 – 89 85 138 e-mail : [nilimar@ath.forthnet.gr](mailto:nilimar@ath.forthnet.gr)

Website: [www.nilimar.com](http://www.nilimar.com)



## BALTIC DRY INDICES 2009



### REPORTED FIXTURES

VESSEL'S NAME	YEAR BUILT	DWT	RATE	CHARTERERS	DURATION
PANTAZIS L	2003	76,629	16,750\$/D	OLDENDORFF	4/6 MONTHS
ALPHA FLAME	1999	74,545	12,500\$/D	GLENCORE	3/5 MONTHS
LINDA LEAH	1997	73,317	12,250\$/D	GMI	4/6 MONTHS
SPAR LYNX	2005	53,565	13,000\$/D	BUNGE	1 YEAR
LISSA TOPIC	2003	52,308	12,000\$/D	OLDENDORFF	3/5 MONTHS
EQUINOX VOYAGER	2002	52,000	15,000\$/D	COSBULK	1 YEAR
UNION RANGER	1995	45,621	9,000\$/D	CARGILL	3/5 MONTHS
VINALINES SKY	1997	42,717	17,000\$/D	ARMADA	3/4 MONTHS

BALTIC DRY INDICES	PREVIOUS WEEK	CURRENT WEEK	+ / -	
BDI	1980	2099	119	▲
BCI	3335	3768	433	▲
BPI	1399	1439	40	▲
BSI	1190	1300	110	▲

THE ABOVE INFORMATION IS GIVEN IN GOOD FAITH BUT WITHOUT GUARANTEE AS TO ACCURACY OF SAYING.

6 A.PAPANDREOU STR., GLYFADA, ATHENS – GREECE

TEL : +30 – 210 - 89 85 813, FAX: +30 – 210 – 89 85 138 e-mail : [nilimar@ath.forthnet.gr](mailto:nilimar@ath.forthnet.gr)

Website: [www.nilimar.com](http://www.nilimar.com)



# NILIMAR Ships Sale & Purchase

## TWEEN / MPP

VESSEL'S NAME	DWT	YEAR BUILT	YARD	GEAR	PRICE USD \$	BUYERS	COMMENTS
ALADDIN DREAM	17.565	1990	WARNOWWERFT GERMANY	CR 5x25T	5.10 M	UNDISCLOSED	-

## CONTAINER

VESSEL'S NAME	DWT	YEAR BUILT	YARD	GEAR	TEU	PRICE USD \$	BUYERS	COMMENTS
HANNES C	7.761	1996	MAWEI, CHINA	CR 2x40T	740	6.50 M	UNDISCLOSED	-
CARL C	5.055	1997	JINLING, CHINA	CR 2x40	350	4.70 M	FINANCING BANK	AT AUCTION

## PCC / RORO / PASS

VESSEL'S NAME	DWT	YEAR BUILT	YARD	CARS /LM	PAX	PRICE USD \$	BUYERS	COMMENTS
<b>- NO SALES REPORTED THIS WEEK -</b>								

THE ABOVE INFORMATION IS GIVEN IN GOOD FAITH BUT WITHOUT GUARANTEE AS TO ACCURACY OF SAYING.

6 A.PAPANDREOU STR., GLYFADA, ATHENS – GREECE

TEL : +30 – 210 - 89 85 813, FAX: +30 – 210 – 89 85 138 e-mail : [nilimar@ath.forthnet.gr](mailto:nilimar@ath.forthnet.gr)

Website: [www.nilimar.com](http://www.nilimar.com)



# NILIMAR Ships Sale & Purchase

## DEMOLITION

VESSEL'S NAME	TYPE	DWT	YEAR BUILT	LDT	PRICE USD/LT	SOLD TO	COMMENTS
NIKOLAOS K	BULK	194.399	1980	28.000	260/270	BANGLADESH	-
BW SUND	GAS	55.303	1981	20.000	P+C	BANGLADESH	-
AGIA SOFIA	BULK	35.063	1982	7.612	262	INDIA	-
EAST SUNRISE 2	BULK	34.855	1974	7.856	277	BANGLADESH	-
KYRIAKOS	BULK	34.368	1976	7.380	P+C	BANGLADESH	-
FJORDSTONE	BULK	31.945	1978	9.196	258	INDIA	-
YM SUN	CONT	31.265	1980	13.784	235	CHINA	-
GEORGIOS III	BULK	30.242	1977	6.852	277	PAKISTAN	-
MERCOSUL MANAUS	CONT	29.830	1983	-	P+C	CHINA	-
ENERGY FALCON	BULK	26.874	1976	6.829	P+C	BANGLADESH	-
OCEAN D	BULK	26.780	1977	6.725	P+C	PAKISTAN	-
DANA MUHIEDDINE	BULK	25.708	1977	7.428	270	INDIA	-
ZAYED	TWEEN	22.954	1979	8.186	P+C	BANGLADESH	-
ZARECHENSK	BULK	22.868	1968	7.412	268	INDIA	-
ABOUDI III	TWEEN	21.050	1977	5.420	264	INDIA	-
ROCIO B	TWEEN	18.864	1982	9.627	188	INDIA	ASIS PORTUGAL
PRINCESS II	TWEEN	18.576	1977	7.194	268	INDIA	-
HYDERABAD	TWEEN	18.257	1980	5.522	273.50	PAKISTAN	EN BLOC WITH MALAKAND / SIBI
MALAKAND	TWEEN	18.242	1980	5.522	273.50	PAKISTAN	EN BLOC WITH HYDERABAD / SIBI
SIBI	TWEEN	16.436	1981	6.733	273.50	PAKISTAN	EN BLOC WITH MALAKAND / HYDERABAD
IRIS ACE	RORO	16.462	1983	9.144	238	CHINA	-
KING CARRIER	TWEEN	10.044	1975	3.676	P+C	INDIA	-
STELLA M	TWEEN	8.825	1985	3.534	164	INDIA	ASIS AJMAN, UNDER TOWAGE
MIKHAIL STENKO	TWEEN	8.540	1975	4.470	P+C	INDIA	-
MORNING CHARM	RORO	8.045	1978	8.756	237	SUB-CONTINENT	ASIS KOREA, EN BLOC WITH MORNING ACE
MORNING ACE	RORO	17.087	1976	8.079	237	SUB-CONTINENT	ASIS KOREA, EN BLOC WITH MORNING CHARM
ION	RORO	6.128	1975	-	P+C	UNDISCLOSED	-
ONIKS	RORO	4.600	1977	5.000	P+C	UNDISCLOSED	-

THE ABOVE INFORMATION IS GIVEN IN GOOD FAITH BUT WITHOUT GUARANTEE AS TO ACCURACY OF SAYING.

6 A.PAPANDREOU STR., GLYFADA, ATHENS – GREECE

TEL : +30 – 210 - 89 85 813, FAX: +30 – 210 – 89 85 138 e-mail : [nilimar@ath.forthnet.gr](mailto:nilimar@ath.forthnet.gr)

Website: [www.nilimar.com](http://www.nilimar.com)



# NILIMAR Ships Sale & Purchase

## NEWBUILDINGS

TYPE	DWT	DELY YEAR	YARD	PRICE USD \$	BUYERS	COMMENTS
- NO ORDERS REPORTED THIS WEEK -						

MARKET RATES	PREVIOUS WEEK	CURRENT WEEK	+ / -	
BRENT	34.17	38.48	4.31	▲
USD – GBP	0.6885	0.6987	0.0102	▲
USD – K WON	1394.35	1481.1	86.75	▲
USD – YEN	91.565	94.16	2.595	▲
USD – EURO	0.777	0.792	0.015	▲

THE ABOVE INFORMATION IS GIVEN IN GOOD FAITH BUT WITHOUT GUARANTEE AS TO ACCURACY OF SAYING.

6 A.PAPANDREOU STR., GLYFADA, ATHENS – GREECE

TEL : +30 – 210 - 89 85 813, FAX: +30 – 210 – 89 85 138 e-mail : [nilimar@ath.forthnet.gr](mailto:nilimar@ath.forthnet.gr)

Website: [www.nilimar.com](http://www.nilimar.com)