



# NILIMAR Ships Sale & Purchase

## MARKET REPORT – WEEK 47

BASED ON SALES AND PURCHASES OF VESSELS WEEK ENDING FRIDAY NOVEMBER 21<sup>ST</sup> 2008

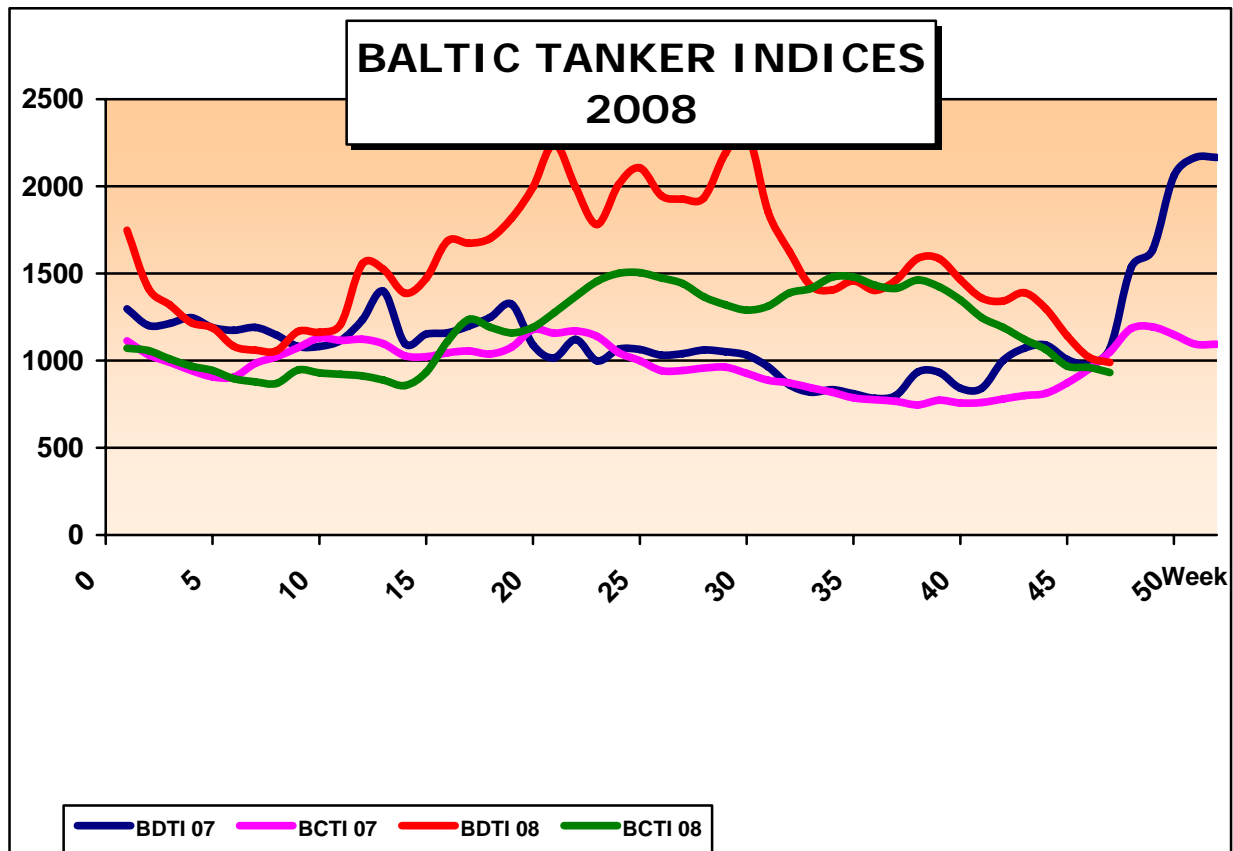
### TANKERS

VESSEL'S NAME	DWT	YEAR BUILT	YARD	HULL	PRICE USD \$	BUYERS	COMMENTS
APEX SPIRIT	159.400	2008	SAMSUNG HEAVY, S.KOREA	DH	98.00 M	LIBYAN (GNMTC)	-
MATILDA	159.233	2007	HYUNDAI SAMHO, S.KOREA	DH	95.00 M	LIBYAN (GNMTC)	-
PACIFIC APOLLO	115.577	2007	SASEBO, JAPAN	DH	70.00 M	UNDISCLOSED	-
PRIMORYE	105.177	2000	HYUNDAI HEAVY, S.KOREA	DH	51.00 M	UNDISCLOSED	-

### LPG

VESSEL'S NAME	DWT	YEAR BUILT	YARD	CBM	PRICE USD \$	BUYERS	COMMENTS
---------------	-----	------------	------	-----	--------------	--------	----------

NO SALES REPORTED THIS WEEK.



THE ABOVE INFORMATION IS GIVEN IN GOOD FAITH BUT WITHOUT GUARANTEE AS TO ACCURACY OF SAYING.

6 A.PAPANDREOU STR., GLYFADA, ATHENS – GREECE

TEL : +30 – 210 - 89 85 813, FAX: +30 – 210 – 89 85 138 e-mail : [nilimar@ath.forthnet.gr](mailto:nilimar@ath.forthnet.gr)

Website: [www.nilimar.com](http://www.nilimar.com)



# NILIMAR Ships Sale & Purchase

## BULKERS

VESSEL'S NAME	DWT	YEAR BUILT	YARD	GEAR	PRICE USD \$	BUYERS	COMMENTS
ENDEAVOUR II	70.029	1994	HUDONG, CHINA	GLESS	P+C EN BLOC	NORWEGIAN (VIKEN)	EN BLOC WITH 4 VESSELS
ENDURANCE II	70.003	1994	HUDONG, CHINA	GLESS	P+C EN BLOC	NORWEGIAN (VIKEN)	EN BLOC WITH 4 VESSELS
NAVIGATOR II	69.146	1998	EISA, BRASIL	GLESS	P+C EN BLOC	NORWEGIAN (VIKEN)	EN BLOC WITH 4 VESSELS
ICE POWER II	43.732	1995	DAEWOO HEAVY, S.KOREA	CR 4x25T	P+C EN BLOC	NORWEGIAN (VIKEN)	EN BLOC WITH 4 VESSELS
ICE TRADER II	43.706	1995	DAEWOO HEAVY, S.KOREA	CR 4x25T	P+C EN BLOC	NORWEGIAN (VIKEN)	EN BLOC WITH 4 VESSELS
PACIFIC ISLAND	54.200	2008	OSHIMA, JAPAN	CR 4x30T	33.50 M	JAPANESE (NISSHIN)	DELY DEC 08 EX YARD
JAG RISHI	41.093	1984	OSHIMA, JAPAN	CR 4x25T GRABS	4.00 M	CHINESE	-
ALFIE	40.864	1986	SANOYAS, JAPAN	CR 4x25T	4.80 M	CHINESE	-
ALLY II	34.503	1977	SUMITOMO, JAPAN	CR 4x15T	6.00 M	FAR EASTERN	OLD SALE
LEPETANE	26.771	1984	CCN MAUA, BRAZIL	CR 4x20T	2.55 M	UNDISCLOSED	SS DUE
ARETOUSA	24.715	1979	NKK, JAPAN	CR 2x15T DR 2x15T CR 2x10T	1.65 M	MIDDLE EASTERN	-
QING RONG 1	21.939	1980	TOHOKU, JAPAN	DR 4x25T	P+C	UNDISCLOSED	-
T YOUNG	6.217	1979	TOHOKU, JAPAN	GLESS	2.90 M	INDONESIAN	CEMENT CARRIER

THE ABOVE INFORMATION IS GIVEN IN GOOD FAITH BUT WITHOUT GUARANTEE AS TO ACCURACY OF SAYING.

6 A.PAPANDREOU STR., GLYFADA, ATHENS – GREECE

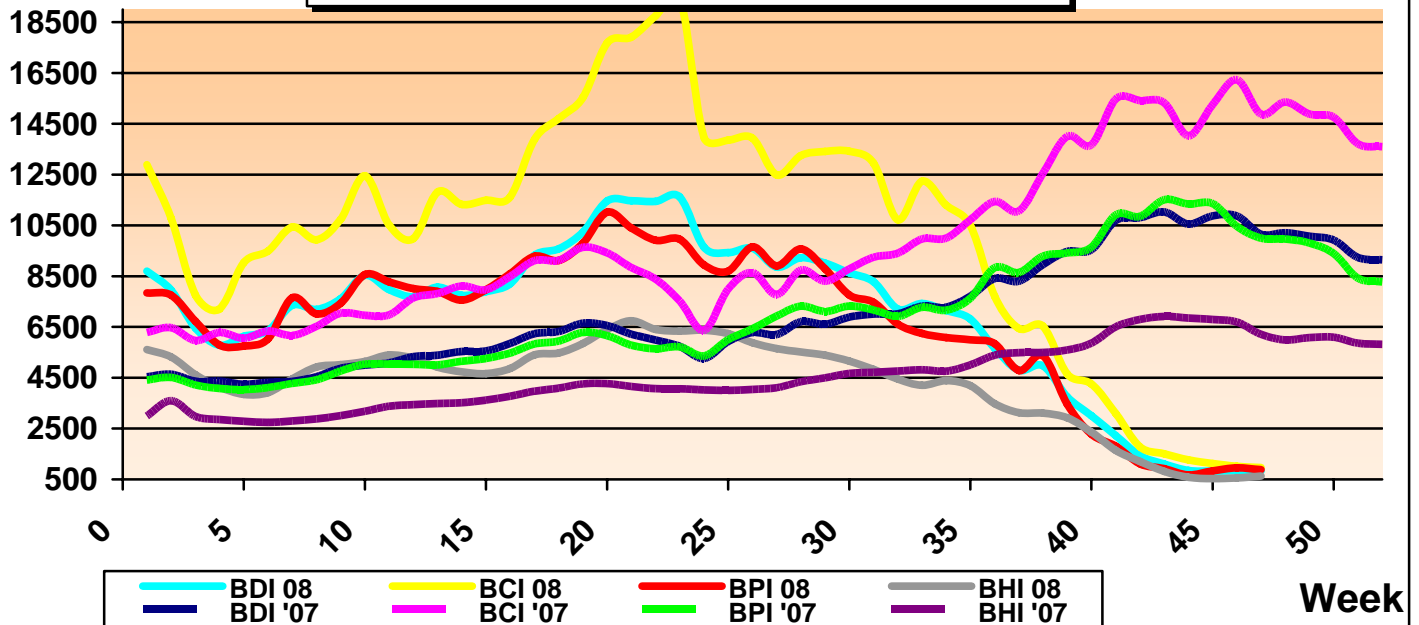
TEL : +30 – 210 - 89 85 813, FAX: +30 – 210 – 89 85 138 e-mail : [nilimar@ath.forthnet.gr](mailto:nilimar@ath.forthnet.gr)

Website: [www.nilimar.com](http://www.nilimar.com)



# NILIMAR Ships Sale & Purchase

## BALTIC DRY INDICES 2008



### REPORTED FIXTURES

VESSEL'S NAME	YEAR BUILT	DWT	RATE	CHARTERERS	DURATION
DELPHINUS	2,007	76,948	15,250\$/D	-	11/13 MONTHS
IKAN BAYAN	2005	75,500	14.750\$/D	-	11/13 MONTHS
CASTLEGATE	2008	53,450	10,400\$/D	-	3/5 MONTHS
GOLDEN WISH	1997	45,719	5,500 / 7,000\$/D	NAVISION	4/6.5 MONTHS
PACIFIC EMBOLDEN	1993	43,396	3,000 / 9,000 \$/D	ED&F MAN SHIPPING	11/13 MONTHS
TUPI MAIDEN	1992	38,852	5,550 / 8,000 \$/D	CARGILL	3/5 MONTHS

BALTIC DRY INDICES	PREVIOUS WEEK	CURRENT WEEK	+ / -	
BDI	841	836	-5	▼
BCI	1016	967	-49	▼
BPI	953	886	-67	▼
BSI	556	634	78	▲

THE ABOVE INFORMATION IS GIVEN IN GOOD FAITH BUT WITHOUT GUARANTEE AS TO ACCURACY OF SAYING.

6 A.PAPANDREOU STR., GLYFADA, ATHENS – GREECE

TEL : +30 – 210 - 89 85 813, FAX: +30 – 210 – 89 85 138 e-mail : [nilimar@ath.forthnet.gr](mailto:nilimar@ath.forthnet.gr)

Website: [www.nilimar.com](http://www.nilimar.com)



# NILIMAR Ships Sale & Purchase

## TWEEN / MPP

VESSEL'S NAME	DWT	YEAR BUILT	YARD	GEAR	PRICE USD \$	BUYERS	COMMENTS
---------------	-----	------------	------	------	--------------	--------	----------

NO SALES REPORTED THIS WEEK.

## CONTAINER

VESSEL'S NAME	DWT	YEAR BUILT	YARD	GEAR	TEU	PRICE USD \$	BUYERS	COMMENTS
---------------	-----	------------	------	------	-----	--------------	--------	----------

NO SALES REPORTED THIS WEEK.

## RORO / PASS

VESSEL'S NAME	DWT	YEAR BUILT	YARD	CARS /LM	PAX	PRICE USD \$	BUYERS	COMMENTS
---------------	-----	------------	------	----------	-----	--------------	--------	----------

NO SALES REPORTED THIS WEEK.

## DEMOLITION

VESSEL'S NAME	TYPE	DWT	YEAR BUILT	LDT	PRICE USD/LT	SOLD TO	COMMENTS
HEBEI DILIGENCE	BULK	65.484	1984	17.511	255	BANGLADESH	-
DANNING PRINCESS	BULK	64.854	1981	17.790	252	INDIA	INCL. 500T ROB
YELLOW SEA	CONT	39.967	1981	15.353	-	UNDISCLOSED	OLD SALE
ZOGRAFIA	BULK	28.962	1978	6.774	225	PAKISTAN	-
IBN YOUNUS	TWEEN	23.618	1977	7.673	293	INDIA	-
GREVENO	BULK	22.170	1978	5.700	285	PAKISTAN	-
WINDWARD	CONT	21.885	1974	6.657	225	INDIA	-
DOCTOR RAMI	BULK	3.699	1968	1.998	190	INDIA	-

THE ABOVE INFORMATION IS GIVEN IN GOOD FAITH BUT WITHOUT GUARANTEE AS TO ACCURACY OF SAYING.

6 A.PAPANDREOU STR., GLYFADA, ATHENS – GREECE

TEL : +30 – 210 - 89 85 813, FAX: +30 – 210 – 89 85 138 e-mail : [nilimar@ath.forthnet.gr](mailto:nilimar@ath.forthnet.gr)

Website: [www.nilimar.com](http://www.nilimar.com)



# NILIMAR Ships Sale & Purchase

## NEWBUILDINGS

TYPE	DWT	DELY YEAR	YARD	PRICE USD \$	BUYERS	COMMENTS
TANKER	315.000	2011	STX	151.00 M	DOLPHIN TANKERS	1 UNIT
TANKER	20.000	2010	21 <sup>ST</sup> CENTURY	-	PRIMERA MARITIME HELLAS	1 UNIT
TANKER	9.500	2010	SUMBER SAMUDRA	-	E.A. BUNKERING SERVICES	2 UNITS
TANKER	8.500	2009	SUMBER SAMUDRA	-	E.A. BUNKERING SERVICES	1 UNIT
MPP	29.000	2010	ANANDA S/Y	-	STELLA SHIPPING	4 UNITS

MARKET RATES	PREVIOUS WEEK	CURRENT WEEK	+ / -	
BRENT	58.75	50.17	-8.58	▼
USD – GBP	0.6781	0.6677	-0.0104	▼
USD – K WON	1399.6	1512.1	112.5	▲
USD – YEN	96.405	95.165	-1.24	▼
USD – EURO	0.7884	0.7951	0.0067	▲

THE ABOVE INFORMATION IS GIVEN IN GOOD FAITH BUT WITHOUT GUARANTEE AS TO ACCURACY OF SAYING.

6 A.PAPANDREOU STR., GLYFADA, ATHENS – GREECE

TEL : +30 – 210 - 89 85 813, FAX: +30 – 210 – 89 85 138 e-mail : [nilimar@ath.forthnet.gr](mailto:nilimar@ath.forthnet.gr)

Website: [www.nilimar.com](http://www.nilimar.com)