



NILIMAR Ships Sale & Purchase

MARKET REPORT – WEEK 38

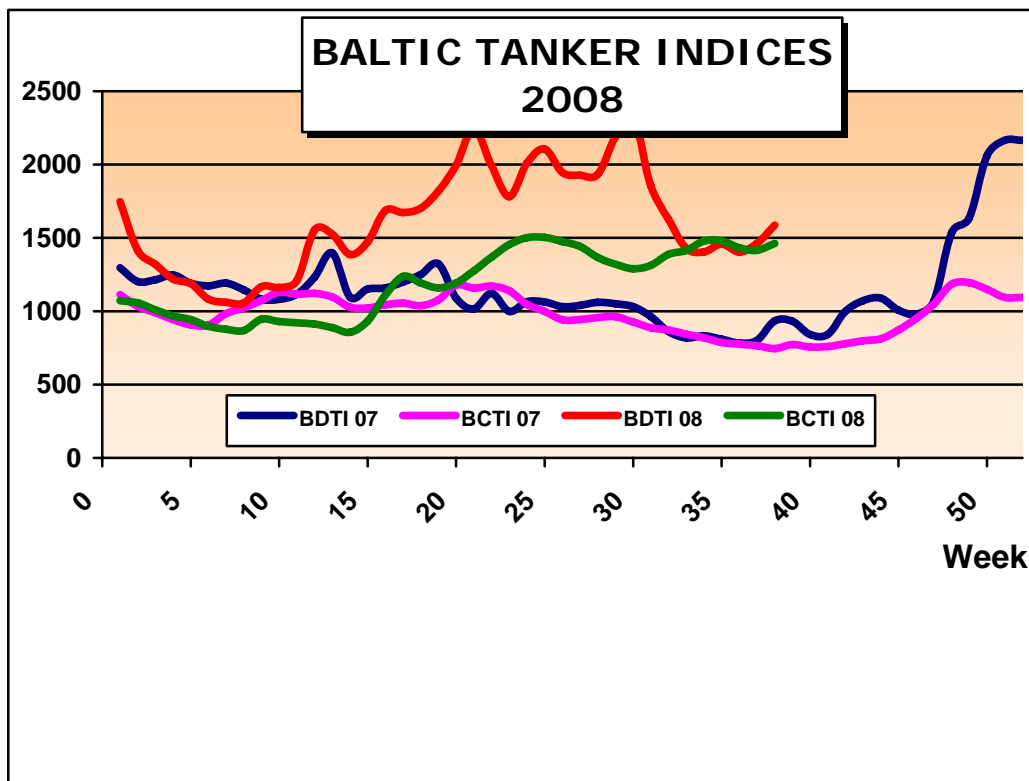
BASED ON SALES AND PURCHASES OF VESSELS WEEK ENDING FRIDAY SEPTEMBER 19th 2008

TANKERS

VESSEL'S NAME	DWT	YEAR BUILT	YARD	HULL	PRICE USD \$	BUYERS	COMMENTS
SITEAM TIGER	44.987	1985	BOELWERF, BELGIUM	DH	10.00 M	MIDDLE EASTERN	DD DUE
PRAMONI	19.998	2008	SHIN KURUSHIMA, JAPAN	DH	52.75 M	NORWEGIAN KS	INCL. 12 YRS BBB AT USD 15.200PD
SUN DAISY	7.569	1985	TAIHEI, JAPAN	DB	3.00 M	UNDISCLOSED	-
B. CUPID	3.115	1980	IMAMURA, JAPAN	DB	P+C	UNDISCLOSED	OLD SALE
KEOYOUNG CHEMI	1.139	1985	SHITANOE, JAPAN	DB	0.70 M	UNDISCLOSED	-

LPG

VESSEL'S NAME	DWT	YEAR BUILT	YARD	CBM	PRICE USD \$	BUYERS	COMMENTS
GAS EVA	3.157	1999	SHITANOE, JAPAN	3.527	10.00 M	CHINESE	INCL. 3 YRS BB AT USD 130.000 PER, MONTH, WITH PURCHASE OBLIGATION



THE ABOVE INFORMATION IS GIVEN IN GOOD FAITH BUT WITHOUT GUARANTEE AS TO ACCURACY OF SAYING.

6 A.PAPANDREOU STR., GLYFADA, ATHENS – GREECE

TEL : +30 – 210 - 89 85 813, FAX: +30 – 210 – 89 85 138 e-mail : nilimar@ath.forthnet.gr

Website: www.nilimar.com



NILIMAR Ships Sale & Purchase

BULKERS

VESSEL'S NAME	DWT	YEAR BUILT	YARD	GEAR	PRICE USD \$	BUYERS	COMMENTS
PINE ROYAL	60.847	1977	BURMEISTER, DENMARK	GLESS	8.20 M	S.KOREAN	-
ABG NARAYANA	47.442	1983	NKK TSU, JAPAN	CR 4x30T	P+C	VIETNAMESE	-
CRUISER	27.019	1982	AESA, SPAIN	CR 4x10T	11.25 M	UNDISCLOSED	OLD SALE
REMBRANDT	26.680	1975	NAMURA, JAPAN	CR 3x25T CR 2x15T	4.70 M	UNDISCLOSED	-
DOLCE I	25.560	1979	CCN MAUA, BRAZIL	CR 5x16T	10.00 M	TURKISH	-
BJ KING	7.045	1990	SHIN KURUSHIMA, JAPAN	DR 2x30T DR 2x25T	9.50 M	UNDISCLOSED	DELY OCT 08
MED WIND	3.108	1979	HARLINGEN, HOLLAND	DR 2x5T	1.00 M	UNDISCLOSED	-

THE ABOVE INFORMATION IS GIVEN IN GOOD FAITH BUT WITHOUT GUARANTEE AS TO ACCURACY OF SAYING.

6 A.PAPANDREOU STR., GLYFADA, ATHENS – GREECE

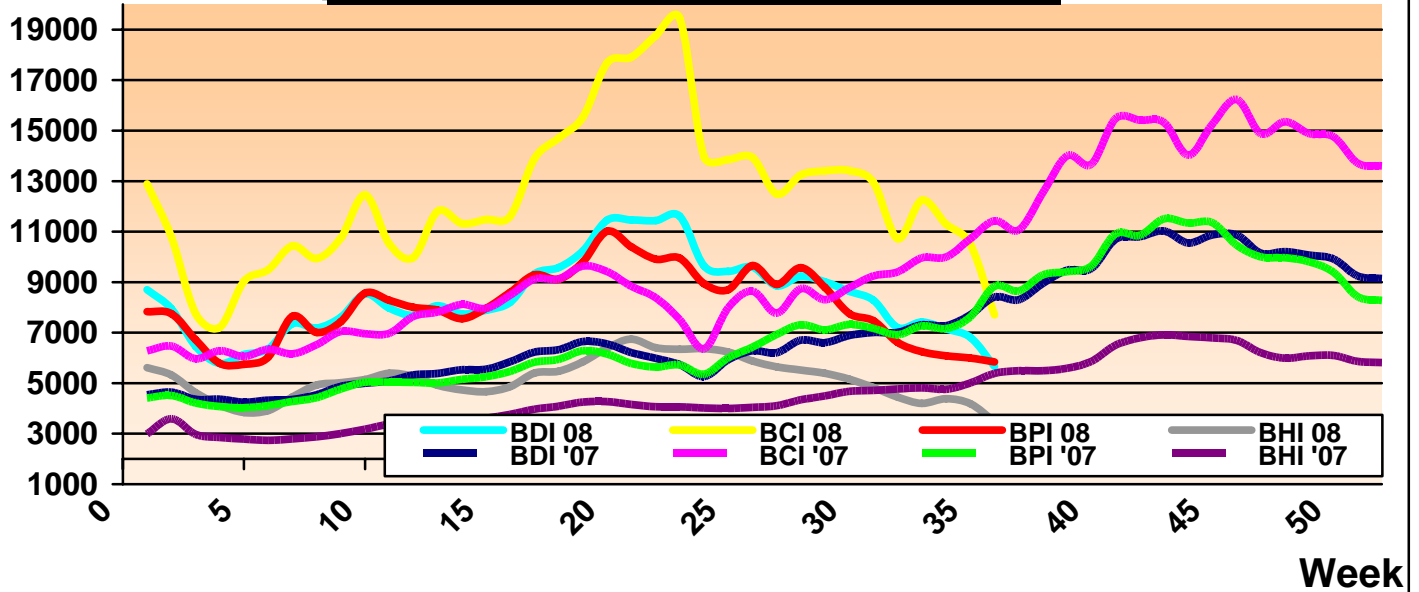
TEL : +30 – 210 - 89 85 813, FAX: +30 – 210 – 89 85 138 e-mail : nilimar@ath.forthnet.gr

Website: www.nilimar.com



NILIMAR Ships Sale & Purchase

BALTIC DRY INDICES 2008



REPORTED FIXTURES

VESSEL'S NAME	YEAR BUILT	DWT	RATE	CHARTERERS	DURATION
JEAN LD	2005	173,000	100,000\$/D	MOSK	12 MONTHS
ALPHA FLAME	1999	74,545	45,000\$/D	-	2 LADEN LEGS
DOMINA	2007	73,593	40,000\$/D + 550.000\$ BB	CARGILL	2 LADEN LEGS
TAI PRIZE	2001	73,169	51,000\$/D	RIO TINTO	11/13 MONTHS
NAVIOS GEMINI S	1994	68,636	40,000/50,000\$/D	CARGILL	2 LADEN LEGS

BALTIC DRY INDICES	PREVIOUS WEEK	CURRENT WEEK	+ / -	
BDI	4800	4975	175	▲
BCI	6438	6528	90	▲
BPI	4785	5368	583	▲
BSI	3126	3102	-24	▼

THE ABOVE INFORMATION IS GIVEN IN GOOD FAITH BUT WITHOUT GUARANTEE AS TO ACCURACY OF SAYING.

6 A.PAPANDREOU STR., GLYFADA, ATHENS – GREECE

TEL : +30 – 210 - 89 85 813, FAX: +30 – 210 – 89 85 138 e-mail : nilimar@ath.forthnet.gr

Website: www.nilimar.com



NILIMAR Ships Sale & Purchase

TWEEN / MPP							
VESSEL'S NAME	DWT	YEAR BUILT	YARD	GEAR	PRICE USD \$	BUYERS	COMMENTS
GREEN PINE	3.853	1983	TOKUSHIMA, JAPAN	DR 3x15T	2.50 M	FAR EASTERN	-

DEMOLITION							
VESSEL'S NAME	TYPE	DWT	YEAR BUILT	LDT	PRICE USD/LT	SOLD TO	COMMENTS
MSC ALICE	CONT	38.984	1976	15.463	560	INDIA	-
HAVGLIMT	GAS	38.534	1978	14.366	600	BANGLADESH	-
YM GALAXY	CONT	31.265	1980	13.784	515	UNDISCLOSED	ASIS HONG KONG
YM OCEAN	CONT	31.209	1980	13.840	515	UNDISCLOSED	ASIS HONG KONG
LOGOS II	PASS	1.881	1968	3.219	450	TURKEY	-

MARKET RATES	PREVIOUS WEEK	CURRENT WEEK	+ / -	
BRENT	101.92	100.11	-1.81	▼
USD – GBP	0.5685	0.5535	-0.015	▼
USD – K WON	1112.5	1152.7	40.2	▲
USD – YEN	107.29	107.51	0.22	▲
USD – EURO	0.7044	0.7023	-0.0021	▼

THE ABOVE INFORMATION IS GIVEN IN GOOD FAITH BUT WITHOUT GUARANTEE AS TO ACCURACY OF SAYING.

6 A.PAPANDREOU STR., GLYFADA, ATHENS – GREECE

TEL : +30 – 210 - 89 85 813, FAX: +30 – 210 – 89 85 138 e-mail : nilimar@ath.forthnet.gr

Website: www.nilimar.com



NILIMAR Ships Sale & Purchase

NEWBUILDINGS

TYPE	DWT	DELY YEAR	YARD	PRICE USD \$	BUYERS	COMMENTS
TANKER	156.000	2011	JIANGSU RONGSHENG	P+C	DS SCHIFFAHRTS GMBH	2 UNITS
GAS	1.550	2009	LINDENAU	P+C	SEYCHELLES PETROLEUM	1 UNIT
BULKER	181.000	2012	STX	94.10 M	SCI	4 UNITS
BULKER	118.000	2010/11	ZHEJIANG	66.00 M	VEGA REEDEREI	4 UNITS
BULKER	115.000	2011	NEW TIMES	65.00 M	HANJIN SHIPPING	2 UNITS
BULKER	37.000	2011/12	HYUNDAI MIPO	P+C	COSMOSHIP MANAGEMENT	6 UNITS
BULKER	34.000	2011	21 ST CENTURY	39.00 M	PRIMEROSE SHIPPING	2 UNITS
BULKER	33.000	2012	ONOMICHI	40.00 M	INUI STEAMSHIP	3 UNITS
BULKER	30.000	2009	YANGZHOU GUOYU	P+C	FREESE, REEDEREI	2 UNITS
BULKER	22.500	2009	VINASHIN	62.00 M EN BLOC	LAOS GOVT.	1 UNIT / EN BLOC WITH 1x20.000 DWT
BULKER	20.000	2009	VINASHIN	62.00 M EN BLOC	LAOS GOVT.	1 UNIT / EN BLOC WITH 1x22.500 DWT
CONT	3.400 TEU	2010	HANJIN H.I.	P+C	CMA CGM	2 UNITS
CONT	3.100 TEU	2010/11	SHENFEI S.Y	P+C	NORDIC HAMBURG	4 UNITS
CONT	2.475 TEU	2010	VOLKSWERFT	P+C	DELPHIS NV	2 UNITS
RORO	2.000 LM	2011/12	KYOKUYO	P+C	COBELFRET	4 UNITS

THE ABOVE INFORMATION IS GIVEN IN GOOD FAITH BUT WITHOUT GUARANTEE AS TO ACCURACY OF SAYING.

6 A.PAPANDREOU STR., GLYFADA, ATHENS – GREECE

TEL : +30 – 210 - 89 85 813, FAX: +30 – 210 – 89 85 138 e-mail : nilimar@ath.forthnet.gr

Website: www.nilimar.com