



MARKET REPORT – WEEK 34

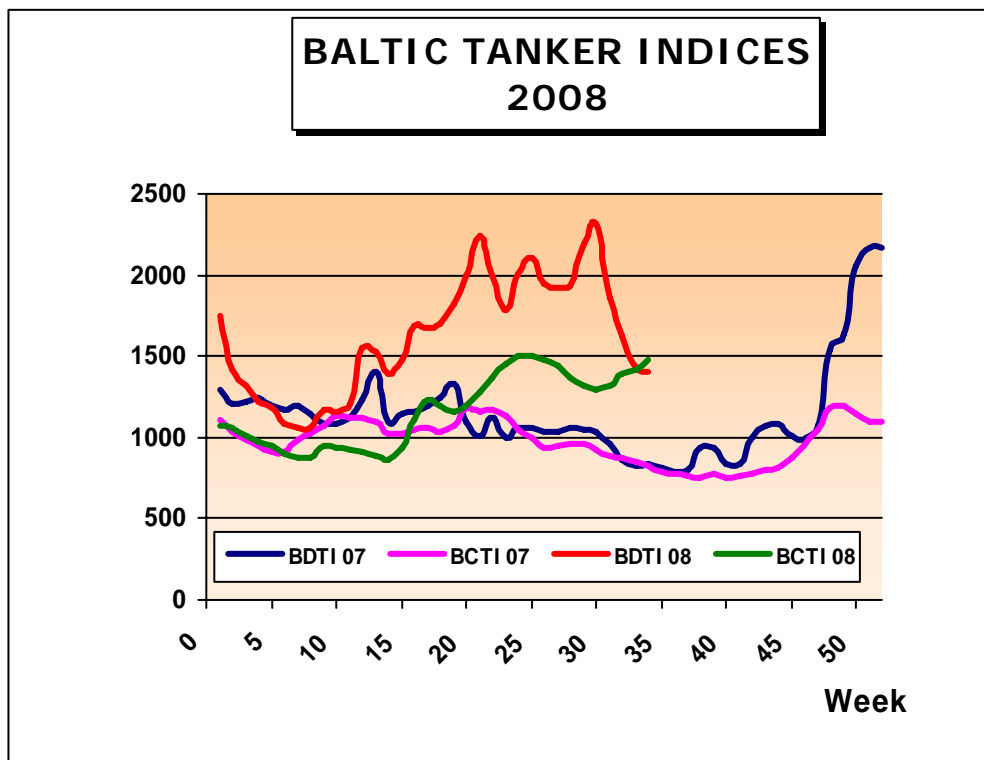
BASED ON SALES AND PURCHASES OF VESSELS WEEK ENDING FRIDAY AUGUST 22nd 2008

TANKERS

VESSEL'S NAME	DWT	YEAR BUILT	YARD	HULL	PRICE USD \$	BUYERS	COMMENTS
ORION STAR	305.783	1994	NKK TSU, JAPAN	SH	47.50 M	GREEK	-
OCEAN OPAL	147.273	1993	AESA PUERTO REAL, SPAIN	SH	40.00 M	CHINESE	FOR CONVERSION
QUASAR	97.197	1989	IMABARI, JAPAN	DS	26.00 M	CHINESE	FOR CONVERSION
SCORPIUS	94.225	1994	FINCANTIERI, ITALY	DH	36.00 M	UNDISCLOSED	-
MIKOM BRAVE	45.869	2000	SHIN KURUSHIMA, JAPAN	DH	45.50 M	GREEK (ANCORA)	-
FAIRCHEM PEGASUS	19.822	2004	FUKUOKA, JAPAN	DH	40.00 M	EUROPEAN	CHEMICAL
ARCTICA	4.406	1969	LODOSE, SWEDEN	DH	P+C	UNDISCLOSED	-
ELVITA	1.295	1971	KARMSUND, NORWAY	DH	P+C	UNDISCLOSED	-

LPG

VESSEL'S NAME	DWT	YEAR BUILT	YARD	CBM	PRICE USD \$	BUYERS	COMMENTS
ORIENTAL LEO	3.213	1996	SHITANOE, JAPAN	3.500	9.00 M	UNDISCLOSED	-



THE ABOVE INFORMATION IS GIVEN IN GOOD FAITH BUT WITHOUT GUARANTEE AS TO ACCURACY OF SAYING.

6 A.PAPANDREOU STR., GLYFADA, ATHENS – GREECE

TEL : +30 – 210 - 89 85 813, FAX: +30 – 210 – 89 85 138 e-mail : nilimar@ath.forthnet.gr

Website: www.nilimar.com

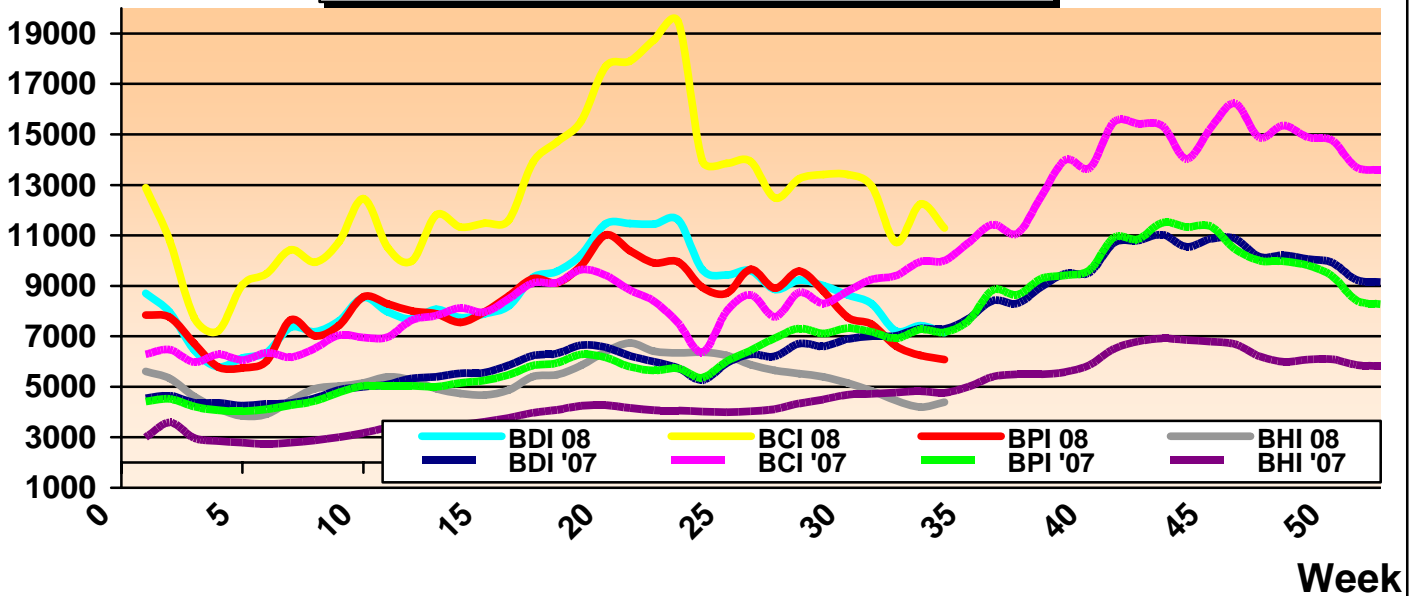


NILIMAR Ships Sale & Purchase

BULKERS

VESSEL'S NAME	DWT	YEAR BUILT	YARD	GEAR	PRICE USD \$	BUYERS	COMMENTS
CUSTODIA ATHENA	41.084	1985	SANOYAS CORP., JAPAN	CR 4x25T	35.00 M	UNDISCLOSED	-
VINASHIN SUMMER	21.340	1983	SHIN YAMAMOTO, JAPAN	CR 3x25T DR 1x25T	7.50 M	VIETNAMESE (HOANG SON)	INCL. TC FOR 6 MOS AT USD 15.000PD

BALTIC DRY INDICES 2008



VESSEL'S NAME	YEAR BUILT	DWT	RATE	CHARTERERS	DURATION
PREM VARSHA	2006	82,379	73,700\$/D	GLORY WEALTH	11/13 MONTHS
MINERAL STAR	2005	76,286	63,000\$/D	PIONEER NAVIGATION	3/5 MONTHS
OCEANIS	2001	75,211	62,000\$/D	NORDEN	3/4 MONTHS
ZAGORA	2001	73,435	57,000\$/D	NORTH CHINA SHIPPING	3/4.5 MONTHS

BALTIC DRY INDICES	PREVIOUS WEEK	CURRENT WEEK	+ / -	
BDI	7420	7147	-273	▼
BCI	12240	11291	-949	▼
BPI	6248	6080	-168	▼
BSI	4200	4387	187	▲

THE ABOVE INFORMATION IS GIVEN IN GOOD FAITH BUT WITHOUT GUARANTEE AS TO ACCURACY OF SAYING.

6 A.PAPANDREOU STR., GLYFADA, ATHENS – GREECE

TEL : +30 – 210 - 89 85 813, FAX: +30 – 210 – 89 85 138 e-mail : nilimar@ath.forthnet.gr

Website: www.nilimar.com



NILIMAR Ships Sale & Purchase

TWEEN / MPP

VESSEL'S NAME	DWT	YEAR BUILT	YARD	GEAR	PRICE USD \$	BUYERS	COMMENTS
BAO FU MEN	16.251	1978	USUKI, JAPAN	DR 1x60T DR 4x22T	P+C	UNDISCLOSED	-
SAIGON 5	15.100	1980	AUSTIN, U.K.	DR 1x30T DR 8x10T DR 2x5T	P+C	VIETNAMESE	-
HO TAY	12.665	1978	NEPTUN, GERMANY	GLESS	4.20 M	UNDISCLOSED	-
TELEMACHUS	4.800	1984	BELGIAN LUNDERBRUGES, BELGIUM	CR 2x25T	P+C	UNDISCLOSED	-
NORDSEE	2.950	1978	NORDERWERFT, GERMANY	GLESS	P+C	GREEK	-

CONTAINER

VESSEL'S NAME	DWT	YEAR BUILT	YARD	GEAR	TEU	PRICE USD \$	BUYERS	COMMENTS
CONTAZ ISTANBUL	14.100	1991	MATHIAS-THESEN, GERMANY	CR 5x40T CR 1x7.5T	1.158	P+C	INDIAN	-
NATALIE BOLTEN	12.998	2001	JIANGSU, CHINA	CR 3x40T	568	20.50 M	ITALIAN	INCL. 2 YRS TC BACK AT USD 13.500PD
JACQUELINE	10.730	1995	MIHO ZOSENSHO, JAPAN	CR 2x40T	844	16.00 M	INDIAN	-
MOCAMBO	9.865	2000	CELIKTEKNE, TURKEY	CR 2x40T	797	P+C	UNDISCLOSED	-
AFRA	8.653	1991	VARNA, BULGARIA	DR 2x40T	481	11.10 M	UNDISCLOSED	-
OCEANIA QUEEN	8.240	1996	CHING FU, TAIWAN	DR 2x30T DR 2x25T	256	15.50 M	THAI	-
OCEAN STONE	7.206	1984	DAEDONG, S.KOREA	CR 2x20T DR 2x20T	286	5.80 M	TURKISH	-
TANTO ABADI	4.232	1994	JIANGZHOU, CHINA	CR 1x36T	270	4.50 M	UNDISCLOSED	-

DEMOLITION

VESSEL'S NAME	TYPE	DWT	YEAR BUILT	LDT	PRICE USD/LT	SOLD TO	COMMENTS
A. ELEPHANT	TANK	264.758	1987		769	BANGLADESH	-
RED SEA	CONT	18.834	1977	8.530	785	BANGLADESH	-
GLORY D	CONT	13.527	1978	5.000	P+C	BANGLADESH	-
FRIO KYKNOS	REEF	3.804	1982	2.004	P+C	BANGLADESH	-
TIAN HUAI	FERRY	2.239	1983	3.616	560	CHINA	-
TIAN JIANG	FERRY	2.237	1984	3.594	560	CHINA	-

THE ABOVE INFORMATION IS GIVEN IN GOOD FAITH BUT WITHOUT GUARANTEE AS TO ACCURACY OF SAYING.

6 A.PAPANDREOU STR., GLYFADA, ATHENS – GREECE

TEL : +30 – 210 - 89 85 813, FAX: +30 – 210 – 89 85 138 e-mail : nilimar@ath.forthnet.gr

Website: www.nilimar.com



NILIMAR Ships Sale & Purchase

NEWBUILDINGS

TYPE	DWT	DELY YEAR	YARD	PRICE USD \$	BUYERS	COMMENTS
TANKER	318.000	2011	DAEWOO S.B.	175.00 M	KUWAIT OIL TANKERS	4 UNITS
TANKER	318.000	2011	STX	P+C	A.P.MOLLER	6 UNITS
TANKER	318.000	2011/12	STX	P+C	AKTIF	4 UNITS
TANKER	316.000	2011/12	SWS	135.00 M	OCEAN TANKERS	6 UNITS
TANKER	300.000	2011	BOHAI S.B.	P+C	CSC NANJING TANKER	2 UNITS
TANKER	300.000	2011	MITSUBISHI H.I.	P+C	NYK	1 UNIT
TANKER	298.000	2011	DALIAN	140.00 M	WAH KWONG	2 UNITS
TANKER	159.000	2011	YANGFAN	85.00 M	TB MARINE	8 UNITS
TANKER	158.000	2011	SUNGDONG	P+C	MEANDROS LINES	1 UNIT
TANKER	158.000	2011	RONGSHENG	85.50 M	STEALTH MARITIME	1 UNIT
TANKER	115.000	2011	SAMSUNG H.I.	70.00 M	GEDEN	1 UNIT
TANKER	5.600	2011	KRASNOY SORMOVO	13.00 M	ARGO SHIPPING JSC	1 UNIT
GAS	83.000 CBM	2011	MITSUBISHI	83.00 M	YUGO STEAMSHIP CO.	1 UNIT
GAS	10.000 CBM	2010/11	SEKWANG H.I.	62.50 M	GERMAN	4 UNITS
BULKER	205.000	2011	BEIHAI S/Y	P+C	TATA POWER	2 UNITS
BULKER	180.000	2010	STX	107.00 M	STX PAN OCEAN	2 UNITS
BULKER	92.500	2011/12	JINLING	P+C	CENTRANS	6 UNITS
BULKER	57.000	2010	QINGSHAN S/Y	45.80 M	GOLDENPORT	2 UNITS
BULKER	54.000	2012	ABG S/Y	36.90 M	ESSAR SHIPPING	1 UNIT
BULKER	33.000	2011	ORIENT S/Y	35.00 M	CHANG MYUNG SHPG.	2 UNITS
MPP	28.000	2011	SHANGDONG HUANGHAI	32.50 M	IRAN SHIPPING LINES	1 UNIT
MPP	6.500	2010	MOKPO S.B.	P+C	SHINSHUNG SHPG. CO.	2 UNITS
CONT	3.600 TEU	2010	HANJIN H.I.	70.00 M	UNDISCLOSED	2 UNITS
CRUISE	93.500 GT	2011/12	AKER, FRANCE	P+C	MSC	2 UNITS

THE ABOVE INFORMATION IS GIVEN IN GOOD FAITH BUT WITHOUT GUARANTEE AS TO ACCURACY OF SAYING.

6 A.PAPANDREOU STR., GLYFADA, ATHENS – GREECE

TEL : +30 – 210 - 89 85 813, FAX: +30 – 210 – 89 85 138 e-mail : nilimar@ath.forthnet.gr

Website: www.nilimar.com



NILIMAR Ships Sale & Purchase

MARKET RATES	PREVIOUS WEEK	CURRENT WEEK	+ / -	
BRENT	117.99	120.3	2.31	▲
USD – GBP	0.5367	0.5381	0.0014	▲
USD – K WON	1039.5	1062.21	22.71	▲
USD – YEN	110.55	109.28	-1.27	▼
USD – EURO	0.6811	0.6744	-0.0067	▼

THE ABOVE INFORMATION IS GIVEN IN GOOD FAITH BUT WITHOUT GUARANTEE AS TO ACCURACY OF SAYING.

6 A.PAPANDREOU STR., GLYFADA, ATHENS – GREECE

TEL : +30 – 210 - 89 85 813, FAX: +30 – 210 – 89 85 138 e-mail : nilimar@ath.forthnet.gr

Website: www.nilimar.com