



# NILIMAR Ships Sale & Purchase

## MARKET REPORT – WEEK 16

BASED ON SALES AND PURCHASES OF VESSELS WEEK ENDING FRIDAY APRIL 18<sup>th</sup> 2008

### TANKERS

VESSEL'S NAME	DWT	YEAR BUILT	YARD	HULL	PRICE USD \$	BUYERS	COMMENTS
TITAN VENUS	250.267	1986	IHI, JAPAN	SH	59.00 M EN BLOC	GREEK (AVIN)	EN BLOC WITH TITAN LEO
TITAN LEO	246.653	1988	HHI, S.KOREA	SH	59.00 M EN BLOC	GREEK (AVIN)	EN BLOC WITH TITAN VENUS
LEANDER	13.300	1999	LINDENAU, GERMANY	DH	46.00 M	UNDISCLOSED	-
NEPTRA PREMIER	6.537	1994	ATLANTIS, SINGAPORE	SH	P+C	NIGERIAN	-
SAMHO IBIS	3.423	2005	SAMHO, S.KOREA	DH	12.00 M	UNDISCLOSED	-
WHITMARINER	2.562	1979	GARONNE, FRANCE	SH	P+C	UNDISCLOSED	-
ELBA	2.139	1977	SANYO, JAPAN	SH	P+C	UNDISCLOSED	-

### LPG

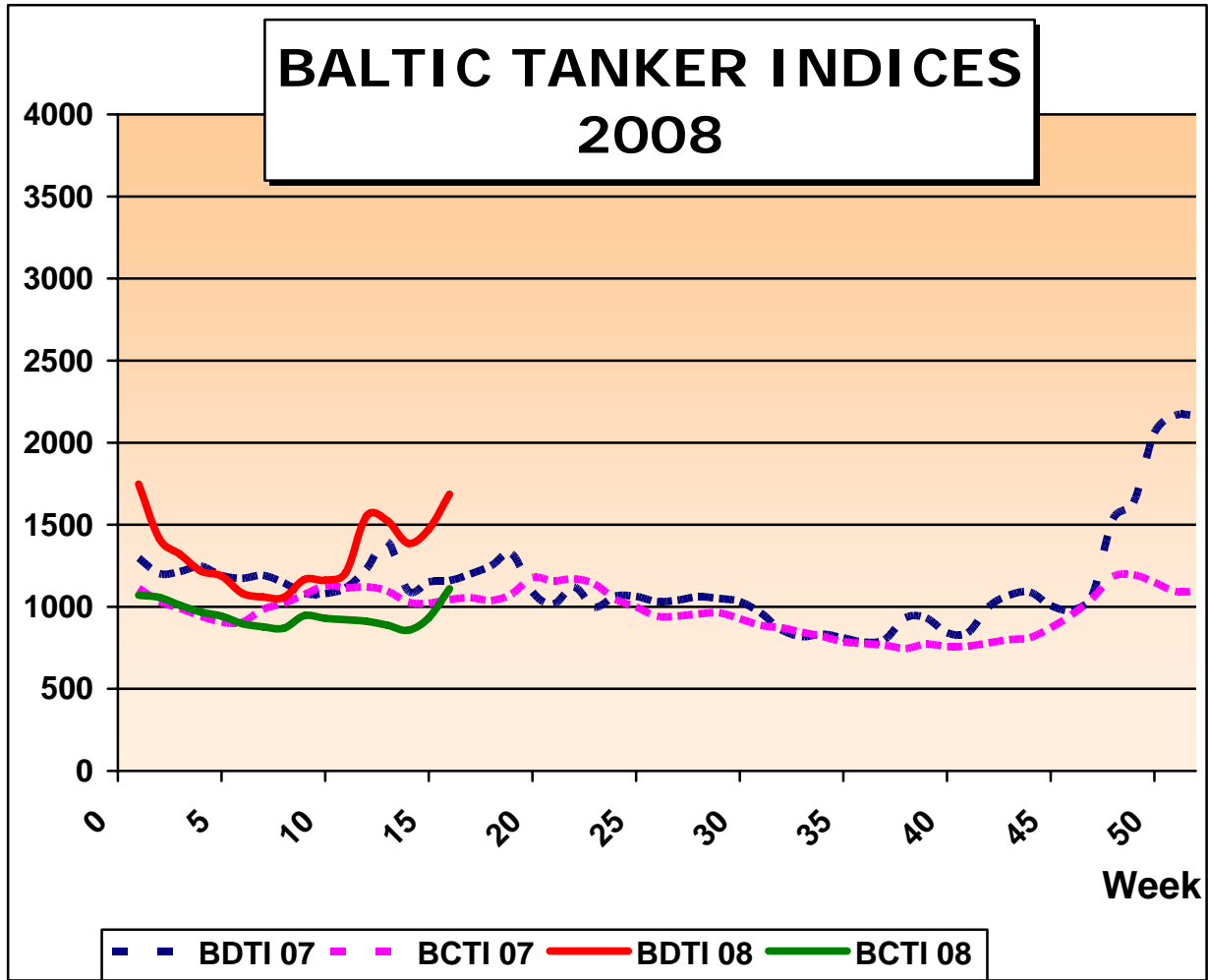
VESSEL'S NAME	DWT	YEAR BUILT	YARD	CBM	PRICE USD \$	BUYERS	COMMENTS
KINNA	3.239	1989	KOREA SHIP/ENG PUSAN, S.KOREA	4.012	7.00 M	NORWEGIAN (T.C.STECKMEST)	INCL. 3 YRS BBB TO SELLERS AT USD 170.000/MONTH

THE ABOVE INFORMATION IS GIVEN IN GOOD FAITH BUT WITHOUT GUARANTEE AS TO ACCURACY OF SAYING.

6 A.PAPANDREOU STR., GLYFADA, ATHENS – GREECE

TEL : +30 – 210 - 89 85 813, FAX: +30 – 210 – 89 85 138 e-mail : [nilimar@ath.forthnet.gr](mailto:nilimar@ath.forthnet.gr)

Website: [www.nilimar.com](http://www.nilimar.com)



THE ABOVE INFORMATION IS GIVEN IN GOOD FAITH BUT WITHOUT GUARANTEE AS TO ACCURACY OF SAYING.

6 A.PAPANDREOU STR., GLYFADA, ATHENS – GREECE

TEL : +30 – 210 - 89 85 813, FAX: +30 – 210 – 89 85 138 e-mail : [nilimar@ath.forthnet.gr](mailto:nilimar@ath.forthnet.gr)

Website: [www.nilimar.com](http://www.nilimar.com)



# NILIMAR Ships Sale & Purchase

## BULKERS

VESSEL'S NAME	DWT	YEAR BUILT	YARD	GEAR	PRICE USD \$	BUYERS	COMMENTS
CASTLE PEAK	151.418	1990	NKK TSU, JAPAN	-	72.00 M	UNDISCLOSED	DELY JUNE 08
FEDERAL MAPLE	76.633	2004	IMABARI, JAPAN	GLESS	87.00 M	GREEK	DELY MAY/JUNE 08
BELLFLOWER	76.423	2004	TSUNEISHI, JAPAN	GLESS	77.00 M	GREEK	DELY FEB 09
WAIKIKI	75.473	1995	FINCANTIERI, ITALY	GLESS	126.00 M EN BLOC	UNDISCLOSED	EN BLOC WITH SOLANA
SOLANA	75.275	1995	B+W, DENMARK	GLESS	126.00 M EN BLOC	UNDISCLOSED	EN BLOC WITH WAIKIKI
BERTRAM	73.506	1995	HYUNDAI, S.KOREA	GLESS	50.00 M	GREEK (EVERLAST SHIPPING)	INCL TC TILL APR 09 AT USD 29.700PD
ROYAL ACCORD	71.335	1997	NAMURA, JAPAN	GLESS	68.00 M	GREEK	-
JIN YING	53.450	2007	IWAGI, JAPAN		160.00 M EN BLOC	GREEK (MAGNA MARINE)	EN BLOC WITH JIN FENG
JIN FENG	53.400	2008	IWAGI, JAPAN		160.00 M EN BLOC	GREEK (MAGNA MARINE)	EN BLOC WITH JIN YING, INCL. TC TILL NOV 08/JAN 09 AT USD 55.000PD
GLORY YANTAI	44.600	1978	GOTAVERKEN, SWEDEN	CR 4x25T	14.70 M	ITALIAN (BOGAZZI)	-
CLIPPER TRANSPORTER	30.570	2007	SHANHAIGUAN, CHINA	CR 4x30T	50.10 M	UNDISCLOSED	EN BLOC WITH CLIPPER TREASURE, INCL 4 YRS TC BACK AT USD 25.000PD
CLIPPER TREASURE	30.548	2007	SHANHAIGUAN, CHINA	CR 4x30T	50.10 M	UNDISCLOSED	EN BLOC WITH CLIPPER TRANSPORTER, INCL. 4 YRS TC BACK AT USD 25.000PD
HYUN KWANG	21.978	1984	TOHOKU, JAPAN	CR 4x25T	P+C	UNDISCLOSED	-

THE ABOVE INFORMATION IS GIVEN IN GOOD FAITH BUT WITHOUT GUARANTEE AS TO ACCURACY OF SAYING.

6 A.PAPANDREOU STR., GLYFADA, ATHENS – GREECE

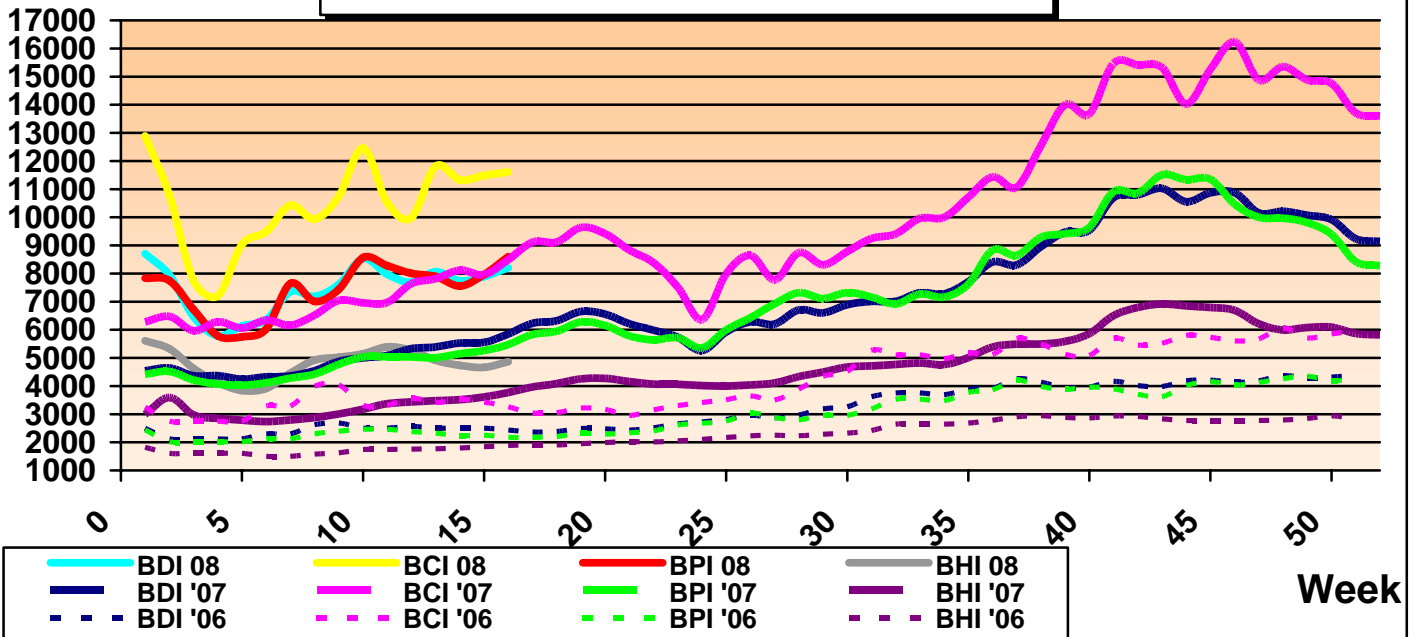
TEL : +30 – 210 - 89 85 813, FAX: +30 – 210 – 89 85 138 e-mail : [nilimar@ath.forthnet.gr](mailto:nilimar@ath.forthnet.gr)

Website: [www.nilimar.com](http://www.nilimar.com)



# NILIMAR Ships Sale & Purchase

## BALTIC DRY INDICES 2008



### REPORTED FIXTURES

VESSEL'S NAME	YEAR BUILT	DWT	RATE	CHARTERERS	DURATION
CLIPPER SUFFOLK	2006	82,992	75,000\$/D	BUNGE	3/5 MONTHS
CYMBELINE	2001	73,081	67,000\$/D	SWISS MARINE	4/6 MONTHS
GENERAL GUISAN	1999	73,035	81,000\$/D	NORDEN	4/6 MONTHS
MONTE PELMO	2000	72,876	76,000\$/D	UNITED	5/7 MONTHS
HUA SHAN HAI	1998	72,769	69,000\$/D	-	5/7 MONTHS
GIOVANNI	1996	72,394	71,500\$/D	EUROPEAN	4/6 MONTHS
TAI HONESTY	2007	55,418	54,000\$/D	KLAVENESS	9/11 MONTHS
CANTON TRADER	2003	52,454	54,000\$/D	NORDEN	6/8 MONTHS

BALTIC DRY INDICES	PREVIOUS WEEK	CURRENT WEEK	+ / -	
BDI	7889	8203	314	▲
BCI	11484	11610	126	▲
BPI	7964	8601	637	▲
BSI	4664	4866	202	▲

THE ABOVE INFORMATION IS GIVEN IN GOOD FAITH BUT WITHOUT GUARANTEE AS TO ACCURACY OF SAYING.

6 A.PAPANDREOU STR., GLYFADA, ATHENS – GREECE

TEL : +30 – 210 - 89 85 813, FAX: +30 – 210 – 89 85 138 e-mail : [nilimar@ath.forthnet.gr](mailto:nilimar@ath.forthnet.gr)

Website: [www.nilimar.com](http://www.nilimar.com)



# NILIMAR Ships Sale & Purchase

## TWEEN / MPP

VESSEL'S NAME	DWT	YEAR BUILT	YARD	GEAR	PRICE USD \$	BUYERS	COMMENTS
CHOHKOH	3.610	1982	SANYO, JAPAN	DR 1x15T DR 2x10T	P+C	UNDISCLOSED	-

## CONTAINER

VESSEL'S NAME	DWT	YEAR BUILT	YARD	GEAR	TEU	PRICE USD \$	BUYERS	COMMENTS
HOLNIS	17.520	1992	NEPTUN, GERMANY	CR 2x40T	1.208	17.00 M	FAR EASTERN	-
JUDITH SCHULTE	12.577	1993	SZCZECINSK POLAND	CR 2x40T	1.012	P+C	DANISH	-
XIANG KUN	12.067	1983	IMABARI, JAPAN	GLESS	582	4.30 M	TURKISH	-

## RORO / PASS

VESSEL'S NAME	DWT	YEAR BUILT	YARD	CARS /LM	PAX	PRICE USD \$	BUYERS	COMMENTS
NEW SHIKOKU	1.292	1989	USUKI, JAPAN	12 CARS	460	6.00 M	UNDISCLOSED	-

## DEMOLITION

VESSEL'S NAME	TYPE	DWT	YEAR BUILT	LDT	PRICE USD/LT	SOLD TO	COMMENTS
MAERSK CONSTANTIA	CONT	50.027	1979	22.903	645	BANGLADESH	ASIS SINGAPORE
ANDAMAN WIND	TANK	17.605	1985	5.595	720	BANGLADESH	-
SIAM XANXAI	TANK	2.170	1976	883	P+C	BANGLADESH	-

MARKET RATES	PREVIOUS WEEK	CURRENT WEEK	+ / -	
BRENT	109.85	110.7	0.85	▲
USD – GBP	0.5065	0.5047	-0.0018	▼
USD – K WON	976.1	997.89	21.79	▲
USD – YEN	101.03	103.34	2.31	▲
USD – EURO	0.6315	0.6294	-0.0021	▼

THE ABOVE INFORMATION IS GIVEN IN GOOD FAITH BUT WITHOUT GUARANTEE AS TO ACCURACY OF SAYING.

6 A.PAPANDREOU STR., GLYFADA, ATHENS – GREECE

TEL : +30 – 210 - 89 85 813, FAX: +30 – 210 – 89 85 138 e-mail : [nilimar@ath.forthnet.gr](mailto:nilimar@ath.forthnet.gr)

Website: [www.nilimar.com](http://www.nilimar.com)



# NILIMAR Ships Sale & Purchase

## NEWBUILDINGS

TYPE	DWT	DELY YEAR	YARD	PRICE USD \$	BUYERS	COMMENTS
TANKER	320.000	2010/11	DALIAN	135.00 M	VANSHIP	2 UNITS
TANKER	300.000	2011	STX	150.00 M	STX PAN OCEAN SHPG.	2 UNITS
TANKER	297.000	2010/11	DALIAN	135.00 M	HOSCO	2 UNITS
TANKER	156.000	2009	JIANGSU RONGSHENG	73.00 M	THENAMARIS	2 + 1 UNITS
BULKER	180.000	2010	C&HEAVY	98.00 M	SHANDONG	1+2 UNITS
BULKER	180.000	2010	HHI	100.00 M	ORION BULKERS	2 UNITS
BULKER	92.500	2009	JINLING	68.00 M	TIANJIN ZHONGTONG	2 UNITS
BULKER	80.000	2011/12	STX	-	SCI	4 UNITS
BULKER	58.000	2011	STX CHINA	-	ALBROS	3 UNITS
MPP	28.000	2011	SHANDONG HUANGHAI	33.27 M	BRAREN, ROERD	2 UNITS
MPP	9.300	2010/11	DAMEN SHIPYARDS GROUP	-	VYBORG SHIPPING	4 UNITS
MPP	7.200	2010/11	DAMEN SHIPYARDS GROUP	-	VYBORG SHIPPING	6 UNITS
MPP	6.050	2010	NANTONG MINGDE	19.90 M	DUTCH	10 UNITS
MPP	3.850	2009/10	ATVT, UKRAINE	-	MULLER OTTO	2 UNITS
CONT	376 TEU	2009/10	NESSEWERFT LEER	-	NIMMICH & PRAHM	2 UNITS
PCC	4.200 CARS	2011	NANTONG MINGDE	57.50 M	PD GRAM	4 UNITS
RORO	9.500	2009/10	HEGEMANN ROLANDWERFT	-	SCANSCOT SHIPPING SERVICES	4 UNITS

THE ABOVE INFORMATION IS GIVEN IN GOOD FAITH BUT WITHOUT GUARANTEE AS TO ACCURACY OF SAYING.

6 A.PAPANDREOU STR., GLYFADA, ATHENS – GREECE

TEL : +30 – 210 - 89 85 813, FAX: +30 – 210 – 89 85 138 e-mail : [nilimar@ath.forthnet.gr](mailto:nilimar@ath.forthnet.gr)

Website: [www.nilimar.com](http://www.nilimar.com)