



# NILIMAR Ships Sale & Purchase

## MARKET REPORT – WEEK 12

BASED ON SALES AND PURCHASES OF VESSELS WEEK ENDING FRIDAY MARCH 21<sup>ST</sup> 2008

### TANKERS

VESSEL'S NAME	DWT	YEAR BUILT	YARD	HULL	PRICE USD \$	BUYERS	COMMENTS
SEA TIGER	94.995	1989	KOYO, JAPAN	DS	19.00 M	CHINESE (HENGLIAN SHIPPING)	-
STENA ITALICA	47.288	2004	ULJANIK, CROATIA	DH	52.00 M	UNDISCLOSED	INCL. 5YRS TC AT USD 15.000PD
BRO ERIK	37.300	2005	JINLING, CHINA	DH	P+C	SWEDISH (FURETANK)	-
JAG PRAYOG	29.990	1982	HELLENIC SHYDS, GREECE	SH	4.60 M	UNDISCLOSED	-
CHEM ORCHID	29.790	1993	VARNA, BULGARIA	DH	25.50 M	UNDISCLOSED	INCL. 5YRS TC BACK AT USD 17.000PD
SOLI HULLS 02/03/06/07	20.000	2008/09	SOLI, TURKEY	DH	160.00 M EN BLOC	GREEK (REMI MARITIME)	4 UNITS
OANA	6.300	2008	ZHENJIANG, CHINA	DH	P+C	UNDISCLOSED	DELY 07/2008
ELENA	6.300	2008	ZHENJIANG, CHINA	DH	P+C	UNDISCLOSED	DELY 04/2008
SOLI HULL 05	5.800	2008	SOLI, TURKEY	DH	19.50 M	DUTCH (LAURANNE SHIPPING)	DELY 10/2008
OCEANVIEW	3.415	1979	KANREI NARUTO, JAPAN	DB	P+C	UNDISCLOSED	ALREADY DELIVERED
ELLEN	2.593	1983	MELTEM, TURKEY	DB	P+C	UNDISCLOSED	ALREADY DELIVERED

### LPG

VESSEL'S NAME	DWT	YEAR BUILT	YARD	CBM	PRICE USD \$	BUYERS	COMMENTS
BW STRAND	55.303	1982	WARTSILA, FINLAND	75.684	14.00 M	GREEK (BENELUX)	-
ARCTIC SPIRIT	48.857	1993	IHI, JAPAN	88.200	230.00 M EN BLOC	NORWEGIAN (TEEKAY LNG PARTNERS)	EN BLOC WITH POLAR SPIRIT, INCL. 10YRS TC BACK TO TEEKAY SHIPPING
POLAR SPIRIT	48.817	1993	IHI, JAPAN	88.200	230.00 M EN BLOC	NORWEGIAN (TEEKAY LNG PARTNERS)	EN BLOC WITH ARCTIC SPIRIT, INCL. 10YRS TC BACK TO TEEKAY SHIPPING

THE ABOVE INFORMATION IS GIVEN IN GOOD FAITH BUT WITHOUT GUARANTEE AS TO ACCURACY OF SAYING.

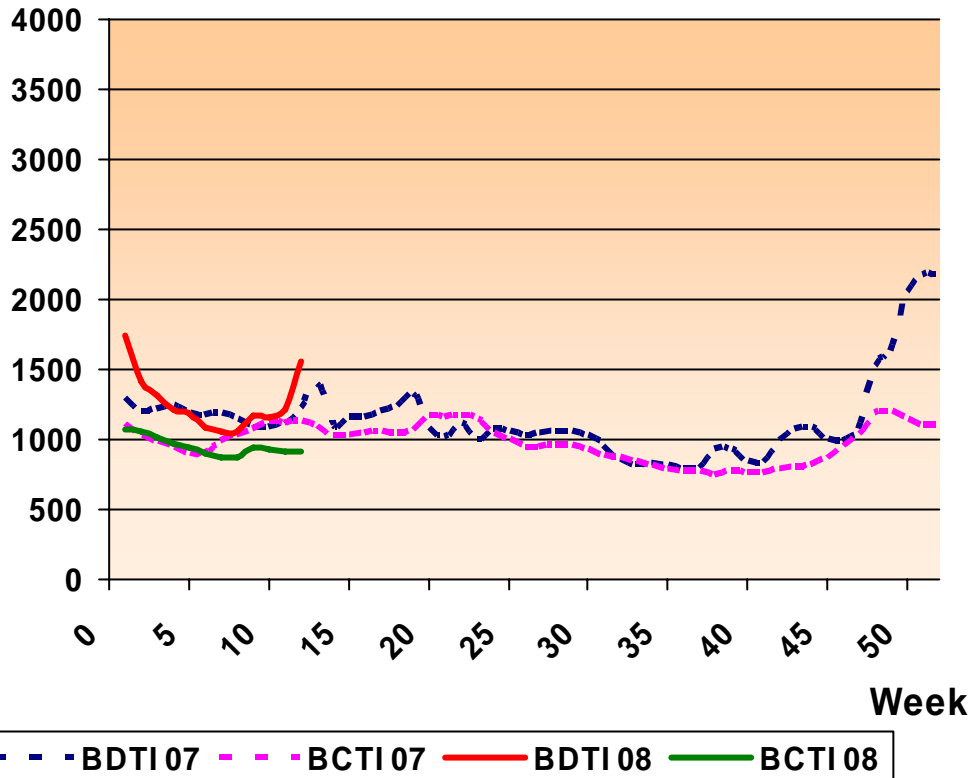
6 A.PAPANDREOU STR., GLYFADA, ATHENS – GREECE

TEL : +30 – 210 - 89 85 813, FAX: +30 – 210 – 89 85 138 e-mail : [nilimar@ath.forthnet.gr](mailto:nilimar@ath.forthnet.gr)

Website: [www.nilimar.com](http://www.nilimar.com)



## BALTIC TANKER INDICES 2008



THE ABOVE INFORMATION IS GIVEN IN GOOD FAITH BUT WITHOUT GUARANTEE AS TO ACCURACY OF SAYING.

6 A.PAPANDREOU STR., GLYFADA, ATHENS – GREECE

TEL : +30 – 210 - 89 85 813, FAX: +30 – 210 – 89 85 138 e-mail : [nilimar@ath.forthnet.gr](mailto:nilimar@ath.forthnet.gr)

Website: [www.nilimar.com](http://www.nilimar.com)



# NILIMAR Ships Sale & Purchase

## BULKERS

VESSEL'S NAME	DWT	YEAR BUILT	YARD	GEAR	PRICE USD \$	BUYERS	COMMENTS
KATSURAGI MARU	188.000	1986	SUMITOMO, JAPAN	-	P+C	GERMAN	-
SAMOS	137.000	1982	ODENSE LINDO, DENMARK	-	25.00 M	UNDISCLOSED	INCL. TC TILL END 2008 AT USD 32.000PD
YUBA	72.578	1987	MITSU, JAPAN	GLESS	47.00 M	UNDISCLOSED	-
LACERTA	71.862	1994	SHIN KURUSHIMA, JAPAN	GLESS	56.00 M	UNDISCLOSED	DELY DEC 08
DOUBLE FORTUNE	69.118	1997	IMABARI, JAPAN	GLESS	67.00 M	S.KOREAN (SAMSUN)	DELY JUNE 08
CUMBRIA	69.043	1994	IMABARI, JAPAN	GLESS	60.00 M	CHINESE	-
THEOFANO M	64.976	1982	TSUNEISHI, JAPAN	GLESS	P+C	NORWEGIAN (LORENTZEN SKIBS)	FIXED BY ETA FOR 5 YRS AT USD 15.000PD
HULK	46.601	1995	SANOYAS, JAPAN	CR 4x30T	56.00 M	S.KOREAN (MIPO)	-
APPENZELL	46.492	2001	MITSU, JAPAN	CR 4x30T	P+C	GREEK	-
STAR EVANGER	44.959	1984	KAWASAKI, JAPAN	CR 2x36T CR 1x35T	25.30 M	ITALIAN (BOGAZZI)	FITTED WITH GANTRY CRANES
ANGEL S	40.501	1978	SANOYASU, JAPAN	CR 3x25T	13.00 M	UNDISCLOSED	-
YARE	37.568	1985	KURUSHIMA, JAPAN	CR 4x25T	30.00 M	UNDISCLOSED	-
GOVIKEN	34.752	1987	3 MAJ, YUGOSLAVIA	CR 3x25T, CR 1x12T	38.00 M EN BLOC	CANADIAN (ALGOMA)	EN BLOC WITH DAVIKEN/ SANDVIKEN, INCL. LONG TERM CHARTER TO FEDNAV
DAVIKEN	34.752	1987	3 MAJ, YUGOSLAVIA	CR 3x25T, CR 1x12T	38.00 M EN BLOC	CANADIAN (ALGOMA)	EN BLOC WITH GOVIKEN/ SANDVIKEN, INCL. LONG TERM CHARTER TO FEDNAV
SANDVIKEN	34.750	1986	3 MAJ, YUGOSLAVIA	CR 3x25T, CR 1x12T	38.00 M EN BLOC	CANADIAN (ALGOMA)	EN BLOC WITH GOVIKEN/ DAVIKEN, INCL. LONG TERM CHARTER TO FEDNAV
LADY EAST	33.670	1978	KANASASHI, JAPAN	DR 5x15T	6.53 M	GREEK	-
TORO	30.702	1975	USUKI SAIKI, JAPAN	DR 5x22T	5.50 M	TURKISH	-
STRANGE ATTRACTOR 1	28.873	1978	HAKODATE, JAPAN	CR 5x15T	10.50 M	UNDISCLOSED	-
PITT ISLAND	28.611	1997	NAIKAI, JAPAN	CR 4x30T	34.00M	DANISH (ID SHIPPING)	INCL. 4YRS TC BACK TO SELLERS
IVS KINGFISHER	28.425	2002	KANDA, JAPAN	CR 4x30T	49.00 M	GREEK BUYERS (BARU DELTA)	-
JAG VIKAS	26.781	1977	NAMURA, JAPAN	CR 5x15T	7.20 M	CHINESE	-
EDELWEISS	22.176	1993	SAIKI, JAPAN	CR 4x30T	31.00 M	FAR EASTERN	-

THE ABOVE INFORMATION IS GIVEN IN GOOD FAITH BUT WITHOUT GUARANTEE AS TO ACCURACY OF SAYING.

6 A.PAPANDREOU STR., GLYFADA, ATHENS – GREECE

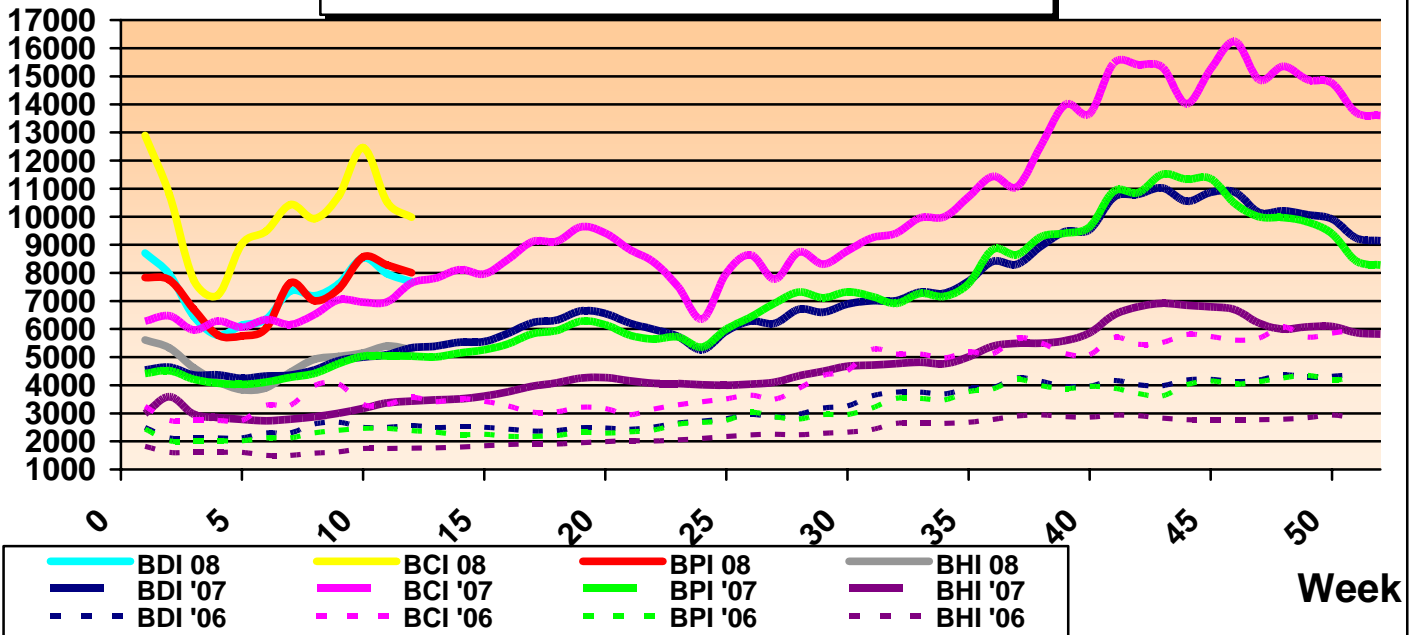
TEL : +30 – 210 - 89 85 813, FAX: +30 – 210 – 89 85 138 e-mail : [nilimar@ath.forthnet.gr](mailto:nilimar@ath.forthnet.gr)

Website: [www.nilimar.com](http://www.nilimar.com)



# NILIMAR Ships Sale & Purchase

## BALTIC DRY INDICES 2008



REPORTED FIXTURES					
VESSEL'S NAME	YEAR BUILT	DWT	RATE	CHARTERERS	DURATION
SCOPE	2006	174,008	105,000\$/D	COSCO QINGDAO	3 YEARS
CHINA FORTUNE	1992	152,000	80,750\$/D	COSCO QINGDAO	3 YEARS
PREM VEENA	2007	82,000	62,500\$/D	SIBA SHIPS ASIA	13 MONTHS
BONITA	2001	76,000	78,000\$/D	SINOCHART	17/19 MONTHS
PEARL SEAS	2006	74,000	51,300\$/D	-	3 YEARS
PIERRE	1996	70,000	70,500\$/D	ARMADA	1 YEAR
PORT MORESBY	2002	53,000	63,500\$/D	CARBOGER GLOBAL TRANSPORT	1 YEAR
PORTLAND CASTLE	1985	46,650	43,000\$/D	MARTRADE	12 MONTHS

BALTIC DRY INDICES	PREVIOUS WEEK	CURRENT WEEK	+ / -	
BDI	7972	7684	-288	▼
BCI	10519	9982	-537	▼
BPI	8280	8006	-274	▼
BSI	5394	5267	-127	▼

THE ABOVE INFORMATION IS GIVEN IN GOOD FAITH BUT WITHOUT GUARANTEE AS TO ACCURACY OF SAYING.

6 A.PAPANDREOU STR., GLYFADA, ATHENS – GREECE

TEL : +30 – 210 - 89 85 813, FAX: +30 – 210 – 89 85 138 e-mail : [nilimar@ath.forthnet.gr](mailto:nilimar@ath.forthnet.gr)

Website: [www.nilimar.com](http://www.nilimar.com)



# NILIMAR Ships Sale & Purchase

## CONTAINER

VESSEL'S NAME	DWT	YEAR BUILT	YARD	GEAR	TEU	PRICE USD \$	BUYERS	COMMENTS
PACIFIC QUEST	32.631	1983	KAWASAKI, JAPAN	GLESS	1.830	P+C	SWISS (MSC)	-

## DEMOLITION

VESSEL'S NAME	TYPE	DWT	YEAR BUILT	LDT	PRICE USD/LT	SOLD TO	COMMENTS
GAZELLE	TANK	60.880	1983	12.735	P+C	BANGLADESH	-
STOLT HERON	TANK	37.082	1979	9.481	550	INDIA	-
BOW CONDOR	TANK	28.084	1977	8.973	P+C	INDIA	-

MARKET RATES	PREVIOUS WEEK	CURRENT WEEK	+ / -	
BRENT	109.68	100.82	-8.86	▼
USD – GBP	0.4916	0.5042	0.0126	▲
USD – K WON	982.4	1003.2	20.8	▲
USD – YEN	100.32	99.335	-0.985	▼
USD – EURO	0.6404	0.6473	0.0069	▲

THE ABOVE INFORMATION IS GIVEN IN GOOD FAITH BUT WITHOUT GUARANTEE AS TO ACCURACY OF SAYING.

6 A.PAPANDREOU STR., GLYFADA, ATHENS – GREECE

TEL : +30 – 210 - 89 85 813, FAX: +30 – 210 – 89 85 138 e-mail : [nilimar@ath.forthnet.gr](mailto:nilimar@ath.forthnet.gr)

Website: [www.nilimar.com](http://www.nilimar.com)



# NILIMAR Ships Sale & Purchase

## NEWBUILDINGS

TYPE	DWT	DELY YEAR	YARD	PRICE USD \$	BUYERS	COMMENTS
TANKER	51.000	2011	STX	51.50 M	TB MARINE	2 UNITS
TANKER	25.200	2012	KITANIHON	60.00 M	BRYGGEN SHIPPING & TRADING	2 UNITS (STST)
TANKER	19.900	2011	FUKUOKA ZOSEN	46.00 M	SANKO KISEN	1 UNIT
BULKER	230.000	2011/12	GUANGZHOU	-	SHANGHAI PUYUANG	4 UNITS
BULKER	180.000	2010	HANJIN, PHILIPPINES	95.00 M	UNDISCLOSED	3 UNITS
BULKER	93.000	2011	SHANHAIGUAN S/B	55.50 M	WAH KWONG SHIPPING	1+1 UNITS
BULKER	75.000	2011	SASEBO	54.00 M	JINHUI S&T	1 UNIT
BULKER	58.000	2011	VINASHIN	50.00 M	STA HOLDING	4+4 UNITS
BULKER	57.000	2010/11	HYUNDAI MIPO	47.50 M	NORDCAPITAL	4 UNITS
BULKER	57.000	2011	NANTONG HANTONG	-	P.DOHLE	4 UNITS
BULKER	57.000	2010/11	JINLING	45.00 M	CHINESE	4+3 UNITS
BULKER	32.000	2010/11	DAESUN S/Y	37.70 M	PEROSEA SHIPPING	4 UNITS
BULKER	25.500	2011	VINASHIN	-	KRISTIAN JEBSENS REDERI	4+4 UNITS
BULKER	16.600	2011	VINASHIN	-	KGJS	4+8 UNITS (CEMENT CARRIER)
CONT	4.250 TEU	2011	DAEWOO	76.90 M	NSB NIEDERELBE	8 UNITS
PCC	5.000 CARS	2011	NAISAI S.B.	-	NISSAN MOTOR CAR	2 UNITS
ROPAX	5.000	2009/11	BARRERAS S.A.	176.00 M	NAVIERAS ARMAS	4 UNITS

THE ABOVE INFORMATION IS GIVEN IN GOOD FAITH BUT WITHOUT GUARANTEE AS TO ACCURACY OF SAYING.

6 A.PAPANDREOU STR., GLYFADA, ATHENS – GREECE

TEL : +30 – 210 - 89 85 813, FAX: +30 – 210 – 89 85 138 e-mail : [nilimar@ath.forthnet.gr](mailto:nilimar@ath.forthnet.gr)

Website: [www.nilimar.com](http://www.nilimar.com)