



NILIMAR Ships Sale & Purchase

MARKET REPORT - WEEK 36

BASED ON SALES AND PURCHASES OF VESSELS WEEK ENDING FRIDAY SEPTEMBER 7TH 2007

TANKERS

| VESSEL'S NAME | DWT | YEAR BUILT | YARD | HULL | PRICE USD \$ | BUYERS | COMMENTS |
|----------------|---------|------------|-------------------------|------|--------------|--------------------|--------------------------|
| UNITED DYNAMIC | 147.720 | 1990 | AESA PUERTO REAL, SPAIN | SH | 28.25 M | U.A.E. BASED (ETA) | - |
| LUCKY SAILOR | 146.387 | 1989 | KAWASAKI, JAPAN | SH | 30.00 M | CHINESE | FOR CONVERSION |
| BERANA | 83.890 | 1985 | B+W, DENMARK | DH | 19.00 M | UNDISCLOSED | - |
| NORD SOUND | 45.975 | 2003 | SHIN KURUSHIMA, JAPAN | DH | 104.00 M | GERMAN (KOENING) | EN BLOC WITH NORD STRAIT |
| NORD STRAIT | 45.934 | 2004 | SHIN KURUSHIMA, JAPAN | DH | 104.00 M | GERMAN (KOENING) | EN BLOC WITH NORD SOUND |
| LONGOBARDA | 10.006 | 1992 | SINGMARINE, SINGAPORE | DH | 14.90 M | FAR EASTERN | CONVERTED |
| SATITTARA | 7.088 | 1984 | HIGAKI, JAPAN | DB | 2.50 M | NIGERIAN | - |
| PHOENIX 5 | 6.764 | 1984 | TAIHEI AKITSU, JAPAN | DB | 2.75 M | UNDISCLOSED | - |
| NARCEA | 4.700 | 2005 | SAHIN CELIK, TURKEY | DH | 18.00 M | UNDISCLOSED | - |

COMBO

| NAME | DWT | YEAR BUILT | YARD | GEAR | PRICE USD \$ | BUYERS | COMMENTS |
|----------------|--------|------------|------------------------|------|--------------|-------------|--|
| TJORE FREMGANG | 96.027 | 1992 | HYUNDAI HEAVY, S.KOREA | DH | 40.00 M | UNDISCLOSED | WITH 3 YRS TC ATTACHED AT USD 28.500PD |

LPG

| VESSEL'S NAME | DWT | YEAR BUILT | YARD | CBM | PRICE USD \$ | BUYERS | COMMENTS |
|---------------|--------|------------|-----------------|--------|--------------|-----------------|----------|
| DESCARTES | 32.634 | 1971 | L'ATLANTIQUE | 50.240 | P+C | UNDISCLOSED | - |
| FOUNTAIN GAS | 3.175 | 1997 | SHITANOE, JAPAN | 3.214 | 10.50 M | GREEK (STEALTH) | - |

THE ABOVE INFORMATION IS GIVEN IN GOOD FAITH BUT WITHOUT GUARANTEE AS TO ACCURACY OF SAYING.

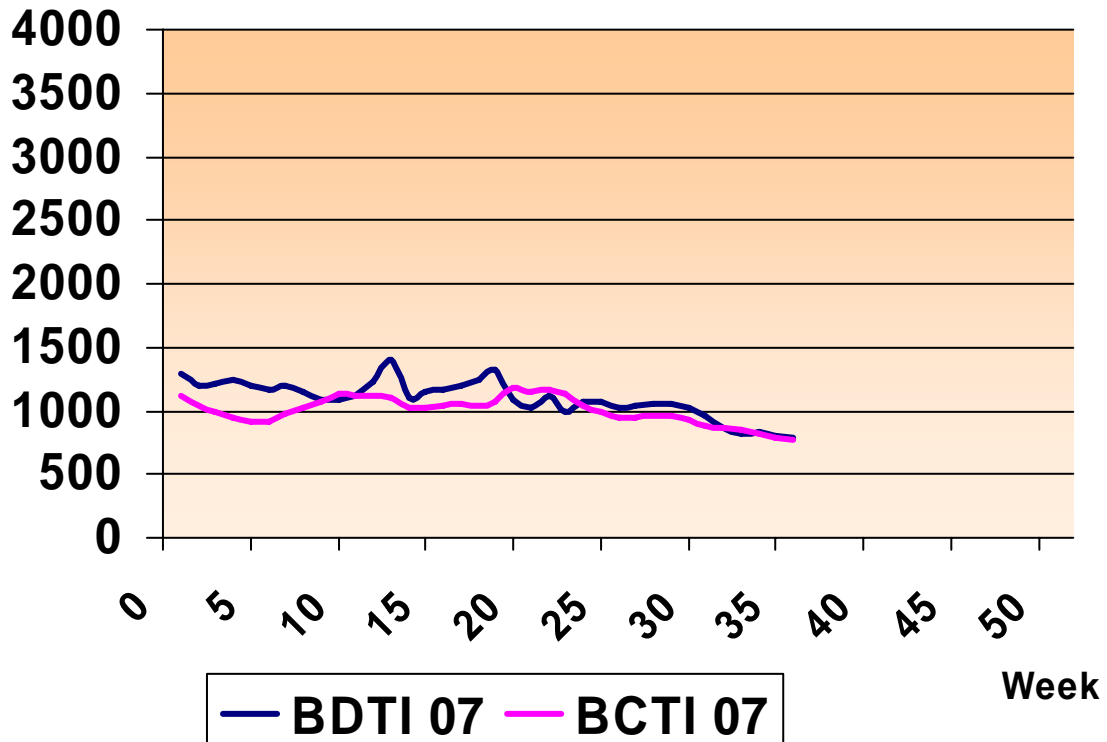
6 A.PAPANDREOU STR., GLYFADA, ATHENS – GREECE

TEL : +30 – 210 - 89 85 813, FAX: +30 – 210 – 89 85 138 e-mail : nilimar@ath.forthnet.gr

Website: www.nilimar.com



BALTIC TANKER INDICES 2007



THE ABOVE INFORMATION IS GIVEN IN GOOD FAITH BUT WITHOUT GUARANTEE AS TO ACCURACY OF SAYING.

6 A.PAPANDREOU STR., GLYFADA, ATHENS – GREECE

TEL : +30 – 210 - 89 85 813, FAX: +30 – 210 – 89 85 138 e-mail : nilimar@ath.forthnet.gr

Website: www.nilimar.com



NILIMAR Ships Sale & Purchase

| BULKERS | | | | | | | |
|-----------------|--------|------------|------------------------|---------------------|--------------|------------------|---|
| VESSEL'S NAME | DWT | YEAR BUILT | YARD | GEAR | PRICE USD \$ | BUYERS | COMMENTS |
| OCEAN EMPEROR | 74.002 | 1998 | HASHIHAMA, JAPAN | GLESS | 55.00 M | UNDISCLOSED | INCL 3 YRS TC TO AUGUSTEA AT USD 25.000PD |
| RAIN KISS | 69.053 | 1996 | IMABARI, JAPAN | GLESS | 62.00 M | GREEK (DRYSHIPS) | - |
| GENCO COMMANDER | 45.518 | 1994 | TSUNEISHI, JAPAN | CR 4x25T | 45.00 M | S.KOREAN | DELY DEC 07 |
| H HASAN YARDIM | 41.084 | 1985 | SANOYAS, JAPAN | CR 4x25T | 25.00 M | UNDISCLOSED | INCL. TC FOR 9 MOS AT USD 21.000PD |
| STATS 1 | 34.227 | 1979 | MITSUMI, JAPAN | CR 5x15T | 9.80 M | UNDISCLOSED | - |
| ATADURU | 30.529 | 1980 | HYUNDAI HEAVY, S.KOREA | CR 2x10T CR 3x5T | 10.00 M | TURKISH | - |
| NEWENS | 30.330 | 1982 | NKK, JAPAN | CR 4x25T | 12.55 M | TAIWANESE | - |
| PALUA PEARL | 29.135 | 1974 | BERGENS, NORWAY | CR 2x25T GRABS | P+C | UNDISCLOSED | - |
| AMBER WAVE | 27.652 | 1986 | MITSUBISHI, JAPAN | CR 4x25T | P+C | DANISH | - |
| OCEAN HARMONY | 23.524 | 1996 | SAIKI, JAPAN | CR 4x30T | 30.50 M | UNDISCLOSED | - |

THE ABOVE INFORMATION IS GIVEN IN GOOD FAITH BUT WITHOUT GUARANTEE AS TO ACCURACY OF SAYING.

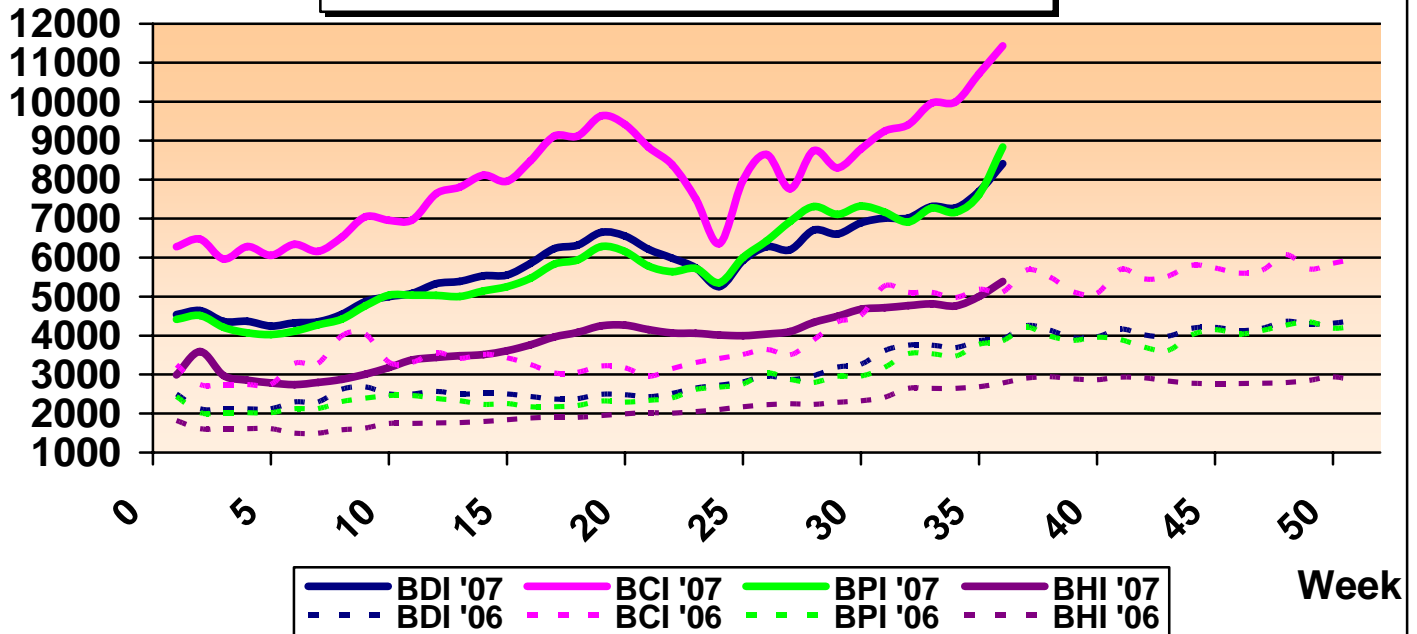
6 A.PAPANDREOU STR., GLYFADA, ATHENS – GREECE

TEL : +30 – 210 - 89 85 813, FAX: +30 – 210 – 89 85 138 e-mail : nilimar@ath.forthnet.gr

Website: www.nilimar.com



BALTIC DRY INDICES 2007



REPORTED FIXTURES

| VESSEL'S NAME | YEAR BUILT | DWT | RATE | CHARTERERS | DURATION |
|----------------|------------|---------|-------------|----------------|--------------|
| MINERAL LONDON | 2006 | 174,000 | 115,000\$/D | MORGAN STANLEY | 1 YEAR |
| MINERAL CHINA | 2003 | 172,000 | 120,000\$/D | DREYFUS&CIE | 1 YEAR |
| ORIENT FORTUNE | 1984 | 161,000 | 60,000\$/D | SHOURONG | 2 YEARS |
| SPITHA | 2005 | 75,400 | 70,000\$/D | - | 7 MONTHS |
| EVER MIGHTY | 1996 | 75,300 | 60,000\$/D | NORDEN | 12/14 MONTHS |
| CYMBELINE | 2001 | 73,100 | 64,000\$/D | NORDEN | 12/14 MONTHS |
| EASTERN OCEAN | 1998 | 45,700 | 49,000\$/D | EASTERN OCEAN | 11/13 MONTHS |

| BALTIC DRY INDICES | PREVIOUS WEEK | CURRENT WEEK | + / - | |
|--------------------|---------------|--------------|-------|---|
| BDI | 7702 | 8410 | 708 | ▲ |
| BCI | 10715 | 11434 | 719 | ▲ |
| BPI | 7620 | 8837 | 1217 | ▲ |
| BSI | 5004 | 5388 | 384 | ▲ |

THE ABOVE INFORMATION IS GIVEN IN GOOD FAITH BUT WITHOUT GUARANTEE AS TO ACCURACY OF SAYING.

6 A.PAPANDREOU STR., GLYFADA, ATHENS – GREECE

TEL : +30 – 210 - 89 85 813, FAX: +30 – 210 – 89 85 138 e-mail : nilimar@ath.forthnet.gr

Website: www.nilimar.com



NILIMAR Ships Sale & Purchase

TWEEN / MPP

| VESSEL'S NAME | DWT | YEAR BUILT | YARD | GEAR | PRICE USD \$ | BUYERS | COMMENTS |
|---------------|--------|------------|---------------------|------------------------|--------------|---------|----------|
| AJAX | 18.056 | 1982 | SHANGHAI S/Y, CHINA | CR 2x25T CR 4x12.5T | 6.30 M | CHINESE | - |

CONTAINER

| VESSEL'S NAME | DWT | YEAR BUILT | YARD | GEAR | TEU | PRICE USD \$ | BUYERS | COMMENTS |
|-----------------|--------|------------|-----------------------|----------|-------|--------------|--------------------------------|---|
| BOSPORUS BRIDGE | 47.359 | 1993 | SHIN KURUSHIMA, JAPAN | GLESS | 3.720 | 19.20 M | GREEK (GOLDENPORT) | DELY OCT 07 |
| TORBEN MAERSK | 21.238 | 1990 | TSUNEISHI, JAPAN | CR 1x40T | 1.316 | P+C | U.S. BASED (EASTWIND MARITIME) | EN BLOC WITH TREIN/TOBIAS/THORKIL MAERSK |
| THORKIL MAERSK | 21.238 | 1990 | TSUNEISHI, JAPAN | CR 1x40T | 1.316 | P+C | U.S. BASED (EASTWIND MARITIME) | EN BLOC WITH TREIN/TOBIAS/TORBEN MAERSK |
| TOBIAS MAERSK | 21.229 | 1990 | TSUNEISHI, JAPAN | CR 1x40T | 1.316 | P+C | U.S. BASED (EASTWIND MARITIME) | EN BLOC WITH TREIN/THORKIL/TORBEN MAERSK |
| TREIN MAERSK | 21.229 | 1990 | TSUNEISHI, JAPAN | CR 1x40T | 1.316 | P+C | U.S. BASED (EASTWIND MARITIME) | EN BLOC WITH TOBIAS/THORKIL/TORBEN MAERSK |
| OPAL | 5.250 | 1997 | JINLING, CHINA | CR 2x40T | 519 | 10.20 M | UNDISCLOSED | - |

DEMOLITION

| VESSEL'S NAME | TYPE | DWT | YEAR BUILT | LDT | PRICE USD/LT | SOLD TO | COMMENTS |
|---------------|------|--------|------------|-------|--------------|------------|-------------|
| RIZA | TANK | 39.258 | 1980 | 7.648 | 590 | BANGLADESH | - |
| REFORMA | TANK | 21.705 | 1974 | 6.318 | 240 | BANGLADESH | ASIS MEXICO |
| REVOLUCION | TANK | 21.702 | 1975 | 6.313 | 283 | BANGLADESH | ASIS MEXICO |
| TRUST 1 | TANK | 1.024 | 1966 | 436 | 225 | TURKEY | - |

THE ABOVE INFORMATION IS GIVEN IN GOOD FAITH BUT WITHOUT GUARANTEE AS TO ACCURACY OF SAYING.

6 A.PAPANDREOU STR., GLYFADA, ATHENS – GREECE

TEL : +30 – 210 - 89 85 813, FAX: +30 – 210 – 89 85 138 e-mail : nilimar@ath.forthnet.gr

Website: www.nilimar.com



NILIMAR Ships Sale & Purchase

NEWBUILDINGS

| TYPE | DWT | DELY YEAR | YARD | PRICE USD \$ | BUYERS | COMMENTS |
|--------|------------|-----------|--------------------|--------------|------------------------------|----------|
| BULKER | 176.000 | 2010 | SHANGHAI WAIGAQIAO | 88.90 M | ALPHA SHIPPING (KALLAKIS) | 2 UNITS |
| BULKER | 170.000 | 2010 | DAEHAN | - | TRANSMED | 4 UNITS |
| BULKER | 92.500 | 2009/10 | JIANGSU YANGZIJANG | 50.00 M | G.BOTTIGLIERI DI NAVIGAZIONE | 2 UNITS |
| BULKER | 82.100 | 2012 | TSUNEISHI | - | MARDAS MARMARA | 2 UNITS |
| BULKER | 81.000 | 2010 | STX | 58.00 M | AEGEAN BULK | 4 UNITS |
| BULKER | 76.000 | 2010 | CSSC | - | DIANA SHIPPING. | 4 UNITS |
| BULKER | 76.000 | 2009/10 | CSSC | - | DYNACOM | 6 UNITS |
| BULKER | 57.000 | 2009/11 | JIANGDONG | 41.00 M | TOP OCEANIA | 6 UNITS |
| TANKER | 52.000 | 2011 | HYUNDAI MIPO | - | TMT CO LTD. | 2 UNITS |
| TANKER | 5.600 | 2008 | DONGBANG | - | SUNWOO | 4 UNITS |
| CONT | 12.600 TEU | 2012 | SAMSUNG HEAVY | 170.00 M | ZIM | 8 UNITS |
| MPP | 16.000 | 2009 | VINASHIN | 13.75 M | CAN THO SHPG. | 6 UNITS |
| PCC | 7.900 CARS | 2011 | HYUNDAI SAMHO | - | TMT CO LTD. | 1 UNIT |

| MARKET RATES | PREVIOUS WEEK | CURRENT WEEK | + / - | |
|--------------|---------------|--------------|---------|---|
| BRENT | 73.36 | 76.3 | 2.94 | ▲ |
| USD – GBP | 0.4946 | 0.4927 | -0.0019 | ▼ |
| USD – K WON | 936.64 | 936.61 | -0.03 | ▼ |
| USD – YEN | 116.39 | 113.93 | -2.46 | ▼ |
| USD – EURO | 0.7301 | 0.7253 | -0.0048 | ▼ |

THE ABOVE INFORMATION IS GIVEN IN GOOD FAITH BUT WITHOUT GUARANTEE AS TO ACCURACY OF SAYING.

6 A.PAPANDREOU STR., GLYFADA, ATHENS – GREECE

TEL : +30 – 210 - 89 85 813, FAX: +30 – 210 – 89 85 138 e-mail : nilimar@ath.forthnet.gr

Website: www.nilimar.com