



NILIMAR Ships Sale & Purchase

MARKET REPORT - WEEK 35

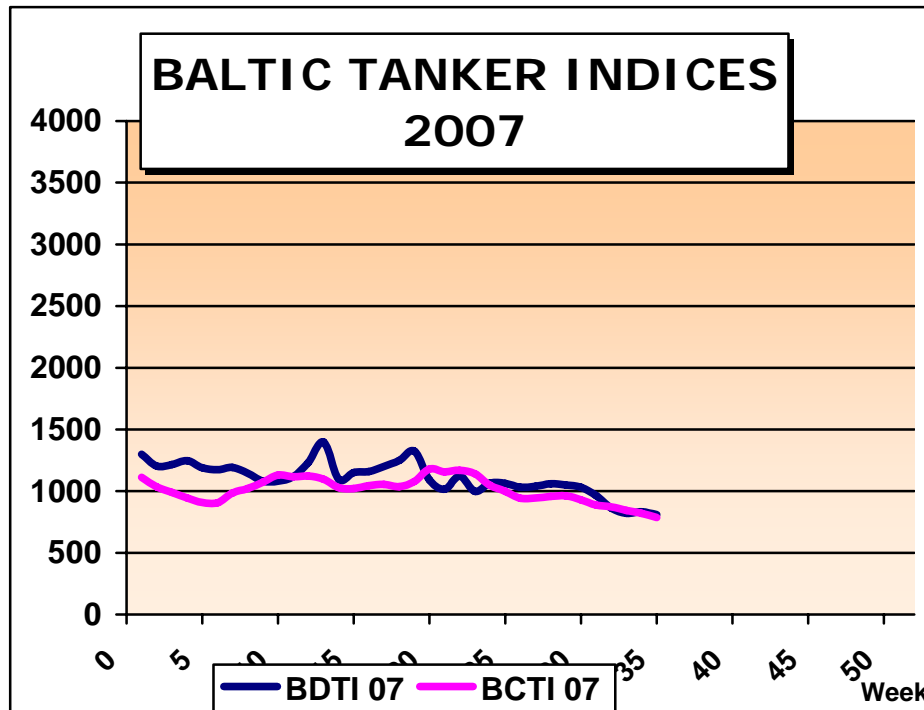
BASED ON SALES AND PURCHASES OF VESSELS WEEK ENDING FRIDAY AUGUST 31TH 2007

TANKERS

VESSEL'S NAME	DWT	YEAR BUILT	YARD	HULL	PRICE USD \$	BUYERS	COMMENTS
ORPHEUS ASIA	274.990	1990	ISHIKAWAJIMA, JAPAN	SH	41.00 M	GREEK (AKRON)	-
NORD SEA	45.987	2003	SHIN KURUSHIMA, JAPAN	DH	49.50 M	GERMAN KG	INCL 5 YRS TC BACK AT USD 22.500PD, DELY MID/END 08
DONGOLA	39.350	1995	GALATI, ROMANIA	DB	19.00 M	FAR EASTERN	-
ARION	11.910	1980	KURINOURA, JAPAN	DB	4.45 M	UNDISCLOSED	-
SHKOTOVO	3.086	1990	HOLLMING, FINLAND	DB	3.20 M	UNDISCLOSED	EN BLOC WITH GURYEV
GURYEV	3.086	1990	RAUMA-REPOLA, FINLAND	DB	3.20 M	UNDISCLOSED	EN BLOC WITH SHKOTOVO

LPG

VESSEL'S NAME	DWT	YEAR BUILT	YARD	CBM	PRICE USD \$	BUYERS	COMMENTS
BERGE SPIRIT	55.173	1980	WARTSILA TURKU, FINLAND	75.683	15.00 M	GREEK (BENELUX)	-



THE ABOVE INFORMATION IS GIVEN IN GOOD FAITH BUT WITHOUT GUARANTEE AS TO ACCURACY OF SAYING.

6 A.PAPANDREOU STR., GLYFADA, ATHENS – GREECE

TEL : +30 – 210 - 89 85 813, FAX: +30 – 210 – 89 85 138 e-mail : nilimar@ath.forthnet.gr

Website: www.nilimar.com



NILIMAR Ships Sale & Purchase

BULKERS							
VESSEL'S NAME	DWT	YEAR BUILT	YARD	GEAR	PRICE USD \$	BUYERS	COMMENTS
WINA	68.377	1988	NAMURA, JAPAN	GLESS	P+C	CHINESE	-
EDCO STAR	64.059	1982	B&W, DENMARK	GLESS	15.00 M	GREEK	-
MED CARRARA	43.300	1981	KASADO, JAPAN	CR 1x40T CR 3x25T	16.00 M	UNDISCLOSED	-
ATHINA	34.173	1980	KOMUNY, POLAND	CR 2x25T	10.30 M	TURKISH	-
OCEAN BEAUTY	24.740	1977	HYUNDAI HEAVY, S.KOREA	CR 4x10T CR 1x5T	P+C	UNDISCLOSED	GEAR NOT WORKING

THE ABOVE INFORMATION IS GIVEN IN GOOD FAITH BUT WITHOUT GUARANTEE AS TO ACCURACY OF SAYING.

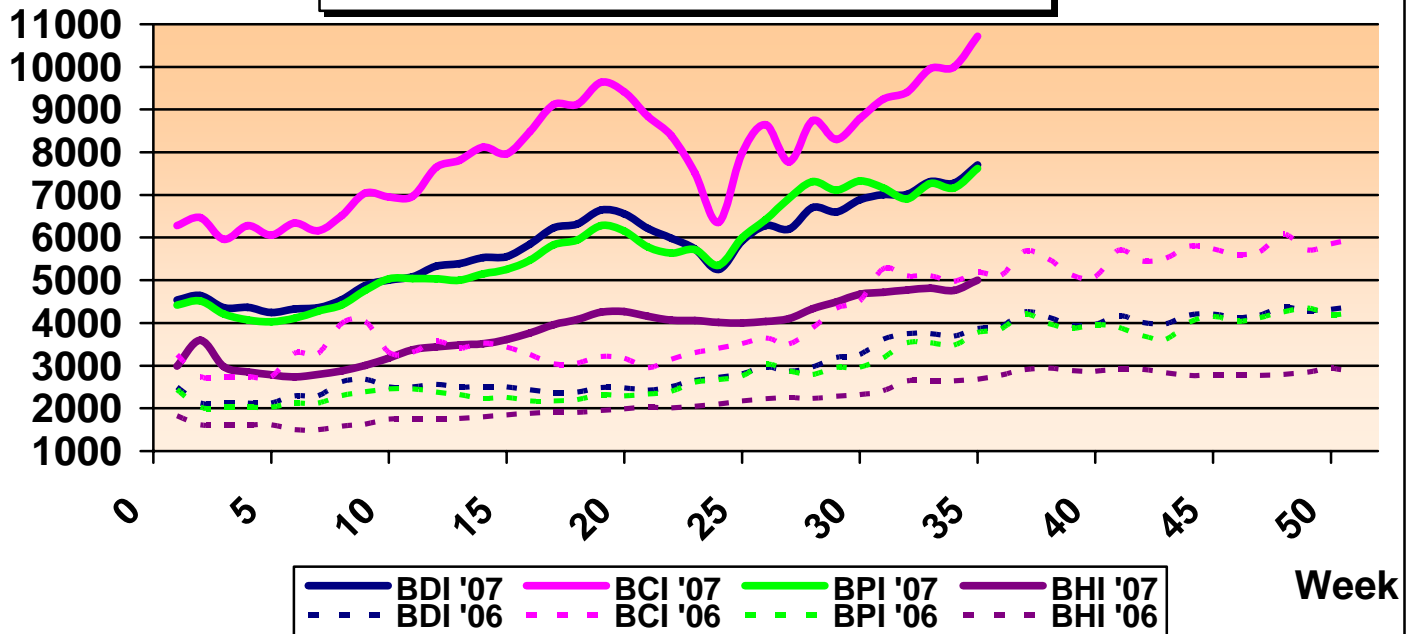
6 A.PAPANDREOU STR., GLYFADA, ATHENS – GREECE

TEL : +30 – 210 - 89 85 813, FAX: +30 – 210 – 89 85 138 e-mail : nilimar@ath.forthnet.gr

Website: www.nilimar.com



BALTIC DRY INDICES 2007



REPORTED FIXTURES

VESSEL'S NAME	YEAR BUILT	DWT	RATE	CHARTERERS	DURATION
CAPE ALBATROSS	2007	203,185	118,000\$/D	-	12 MONTHS
ANANGEL EXPLORER	2007	171,027	97,500\$/D	-	2 YEARS
CAPE AFRICA	1991	149,533	97,000\$/D	-	15/17 MONTHS
GENCO SURPRISE	1998	72,495	42,100\$/D	-	3 YEARS
AGIOS EPHRAIM	1998	73,108	62,000\$/D	-	1 YEAR
METEORA	2007	58,480	55,000\$/D	-	5/7 MONTHS
MADONNA 3	2007	53,500	44,800\$/D	-	2 YEARS

BALTIC DRY INDICES	PREVIOUS WEEK	CURRENT WEEK	+ / -	
BDI	7277	7702	425	▲
BCI	9996	10715	719	▲
BPI	7160	7620	460	▲
BSI	4761	5004	243	▲

THE ABOVE INFORMATION IS GIVEN IN GOOD FAITH BUT WITHOUT GUARANTEE AS TO ACCURACY OF SAYING.

6 A.PAPANDREOU STR., GLYFADA, ATHENS – GREECE

TEL : +30 – 210 - 89 85 813, FAX: +30 – 210 – 89 85 138 e-mail : nilimar@ath.forthnet.gr

Website: www.nilimar.com



NILIMAR Ships Sale & Purchase

TWEEN / MPP

VESSEL'S NAME	DWT	YEAR BUILT	YARD	GEAR	PRICE USD \$	BUYERS	COMMENTS
SPORTSQUEEN	17.884	1979	ONOMICHI, JAPAN	CR 2x25T DR 2x25T	5.50 M	GREEK	-
IRAN BORHAN	16.265	1975	WESER SEEBECKWERFT, GERMANY	CR 2x20T CR 4x12.5T	3.10 M	UNDISCLOSED	-

CONTAINER

VESSEL'S NAME	DWT	YEAR BUILT	YARD	GEAR	TEU	PRICE USD \$	BUYERS	COMMENTS
CITY OF HAMBURG	30.400	1990	HHI, S.KOREA	GLESS	2.228	24.00 M	GREEK (EUROSEAS)	INCL 2 YRS TC FROM JULY 07 TO BENGAL LINES AT USD 16.500PD LESS 3.75PCT
TS PUSAN	13.760	2003	JINLING, CHINA	CR 2x45T	1.076	25.00 M	UNDISCLOSED	-

RORO/PAX

VESSEL'S NAME	DWT	YEAR BUILT	YARD	PAX	CARS	PRICE USD \$	BUYERS	COMMENTS
SUPERFERRY 15	4.429	1989	ONOMICHI , JAPAN	780	100	17.00 M	UNDISCLOSED	-

DEMOLITION

VESSEL'S NAME	TYPE	DWT	YEAR BUILT	LDT	PRICE USD/LT	SOLD TO	COMMENTS
WINOTO UDANG NATUNA	TANK	31.600	1975	6.959	470	BANGLADESH	ASIS INDONESIA
ALAMOIA	TANK	9.981	1978	2.873	920	INDIA	ASIS SANTOS, WITH HIGH SOLID STST CONTENT AND BUNKERS FOR VOYAGE TO INDIA
BARON	BULK	18.314	1976	5.550	497	INDIA	-
SAN LORENZO RUIZ	RORO	2.988	1973	5.211	240	BANGLADESH	ASIS PHILIPPINES, ENBLOC WITH MARY QUEEN OF PEACE
MARY QUEEN OF PEACE	RORO	2.595	1974	7.339	240	BANGLADESH	ASIS PHILIPPINES, ENBLOC WITH SAN LORENZO RUIZ

THE ABOVE INFORMATION IS GIVEN IN GOOD FAITH BUT WITHOUT GUARANTEE AS TO ACCURACY OF SAYING.

6 A.PAPANDREOU STR., GLYFADA, ATHENS – GREECE

TEL : +30 – 210 - 89 85 813, FAX: +30 – 210 – 89 85 138 e-mail : nilimar@ath.forthnet.gr

Website: www.nilimar.com



NILIMAR Ships Sale & Purchase

NEWBUILDINGS

TYPE	DWT	DELY YEAR	YARD	PRICE USD \$	BUYERS	COMMENTS
BULKER	300.000	2012	CHINESE	-	TISCO	2 + 1 UNITS
BULKER	180.000	2010	JIANGNAN	-	ORION BULKERS	3 UNITS
BULKER	180.000	2009/10	ODENSE	90.00 M	CARRAS HELLAS	4 UNITS
BULKER	180.000	2009/11	QINGDAO	-	CHINA MERCHANTS	2 UNITS
BULKER	180.000	2009/11	DALIAN	-	CHINA MERCHANTS	3 UNITS
BULKER	180.000	2010	HHI	90.00 M	DONG-A	2 UNITS
BULKER	177.000	2010	JIANGNAN	-	GLEAMRAY MARITIME	1 UNIT
BULKER	177.000	2010	JIANGNAN	-	REMI MARITIME	2 UNITS
BULKER	177.000	2010	JIANGNAN	-	MINERVA MARITIME	2 UNITS
BULKER	176.000	2010	RONGSHENG	-	KIRAN	2 UNITS
BULKER	81.700	2009/10	STX	53.75 M	TROJAN	4 UNITS
BULKER	80.500	2009/11	FUJIAN GUANHAI	43.00 M	DRAGON TREASURE	4 UNITS
BULKER	75.000	2010/11	PIPAVAV	47.00 M	AVGI MARITIME SERVICES	12 + 4 UNITS
BULKER	34.000	2009	GUANHAI	32.00 M	MST OF GERMANY	2 + 6 UNITS
BULKER	21.200	2012	NULYARD	-	NAVIBULGAR	1 UNIT
TANKER	105.000	2011	HHI	65.00 M	ST SHIPPING	2 UNITS
TANKER	73.500	2010/11	SPP	62.00 M	OSG	4 UNITS
TANKER	25.000	2010/12	NANTONG MINGLE	-	SCHULTE BERNHARD	12 UNITS
TANKER	10.500	2008	TERSAN SHIPYARD	-	LAURANNE SHIPPING	1 UNIT
CONT	12.600 TEU	2011/12	SAMSUNG	167.50 M	P.DOHLE	8 UNITS
CONT	12.000 TEU	2009/11	SHINA SHIP.	160.00 M	CSAV	4 UNITS
CONT	9.300 TEU	2010/11	IHI MARINE	145.00 M	NYK LINES	3 UNITS
CONT	1.800 TEU	2009/10	KOUAN	-	VROON	2 UNITS

MARKET RATES	PREVIOUS WEEK	CURRENT WEEK	+ / -	
BRENT	69.51	73.36	3.85	▲
USD – GBP	0.4988	0.4946	-0.0042	▼
USD – K WON	940.06	936.64	-3.42	▼
USD – YEN	115.885	116.39	0.505	▲
USD – EURO	0.7343	0.7301	-0.0042	▼

THE ABOVE INFORMATION IS GIVEN IN GOOD FAITH BUT WITHOUT GUARANTEE AS TO ACCURACY OF SAYING.

6 A.PAPANDREOU STR., GLYFADA, ATHENS – GREECE

TEL : +30 – 210 - 89 85 813, FAX: +30 – 210 – 89 85 138 e-mail : nilimar@ath.forthnet.gr

Website: www.nilimar.com